

Datasheet for ABIN2788155
anti-ARL3 antibody (N-Term)

2 Images

[Go to Product page](#)

Overview

Quantity:	100 µL
Target:	ARL3
Binding Specificity:	N-Term
Reactivity:	Human, Mouse, Rat, Guinea Pig, Sheep, Horse, Zebrafish (Danio rerio), Cow, Rabbit, Dog, Saccharomyces cerevisiae
Host:	Rabbit
Clonality:	Polyclonal
Conjugate:	This ARL3 antibody is un-conjugated
Application:	Western Blotting (WB)

Product Details

Immunogen:	The immunogen is a synthetic peptide directed towards the N terminal region of human ARL3
Sequence:	QRKIRPYWKN YFENTDILYI VIDSADRKRF EETGQELAE LEEELSCVP
Predicted Reactivity:	Cow: 100%, Dog: 100%, Guinea Pig: 100%, Horse: 100%, Human: 100%, Mouse: 100%, Rabbit: 100%, Rat: 100%, Sheep: 100%, Yeast: 77%, Zebrafish: 100%
Characteristics:	This is a rabbit polyclonal antibody against ARL3. It was validated on Western Blot.
Purification:	Affinity Purified

Target Details

Target:	ARL3
---------	------

Target Details

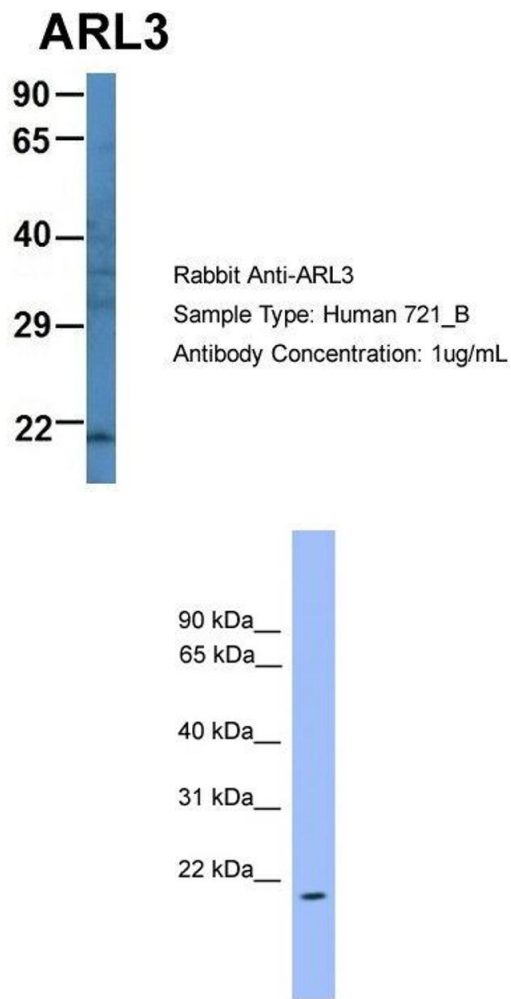
Alternative Name:	ARL3 (ARL3 Products)
Background:	<p>ARL3 is required for normal cytokinesis. 'ARL3 does not act as an allosteric activator of the cholera toxin catalytic subunit.</p> <p>Alias Symbols: ARFL3</p> <p>Protein Interaction Partner: UBC, LRIF1, ARL2BP, UBR1, UNC119, PDE6D, TUBA1A, GOLGA4, TLE1, RP2, TP53,</p> <p>Protein Size: 182</p>
Molecular Weight:	20 kDa
Gene ID:	403
NCBI Accession:	NM_004311 , NP_004302
UniProt:	P36405

Application Details

Application Notes:	Optimal working dilutions should be determined experimentally by the investigator.
Comment:	Antigen size: 182 AA
Restrictions:	For Research Use only

Handling

Format:	Liquid
Concentration:	Lot specific
Buffer:	Liquid. Purified antibody supplied in 1x PBS buffer with 0.09 % (w/v) sodium azide and 2 % sucrose.
Preservative:	Sodium azide
Precaution of Use:	This product contains Sodium azide: a POISONOUS AND HAZARDOUS SUBSTANCE which should be handled by trained staff only.
Handling Advice:	Avoid repeated freeze-thaw cycles.
Storage:	-20 °C
Storage Comment:	For short term use, store at 2-8°C up to 1 week. For long term storage, store at -20°C in small aliquots to prevent freeze-thaw cycles.



Western Blotting

Image 1. Host: Rabbit Target Name: ARL3 Sample Type: Human 721_B Antibody Dilution: 1.0ug/ml ARL3 is supported by BioGPS gene expression data to be expressed in 721_B

Western Blotting

Image 2. WB Suggested Anti-ARL3 Antibody Titration: 1.0 ug/ml Positive Control: MCF7 Whole Cell ARL3 is supported by BioGPS gene expression data to be expressed in MCF7