

Datasheet for ABIN2788185
anti-OR2L3 antibody (C-Term)[Go to Product page](#)

2 Images

Overview

Quantity:	100 µL
Target:	OR2L3
Binding Specificity:	C-Term
Reactivity:	Human, Cow, Dog, Guinea Pig, Horse, Mouse, Rabbit, Rat
Host:	Rabbit
Clonality:	Polyclonal
Conjugate:	This OR2L3 antibody is un-conjugated
Application:	Western Blotting (WB)

Product Details

Immunogen:	The immunogen is a synthetic peptide directed towards the C terminal region of human OR2L3
Sequence:	KSAEGRKKAY LTCSTHLTVV TFYYAPFVYT YLRPRSLRSP TEDKVLAVFY
Predicted Reactivity:	Cow: 93%, Dog: 93%, Guinea Pig: 93%, Horse: 93%, Human: 100%, Mouse: 93%, Rabbit: 79%, Rat: 93%
Characteristics:	This is a rabbit polyclonal antibody against OR2L3. It was validated on Western Blot.
Purification:	Affinity Purified

Target Details

Target:	OR2L3
Alternative Name:	OR2L3 (OR2L3 Products)

Target Details

Background: Olfactory receptors interact with odorant molecules in the nose, to initiate a neuronal response that triggers the perception of a smell. The olfactory receptor proteins are members of a large family of G-protein-coupled receptors (GPCR) arising from single coding-exon genes. Olfactory receptors share a 7-transmembrane domain structure with many neurotransmitter and hormone receptors and are responsible for the recognition and G protein-mediated transduction of odorant signals. The olfactory receptor gene family is the largest in the genome. The nomenclature assigned to the olfactory receptor genes and proteins for this organism is independent of other organisms.

Alias Symbols: -

Protein Size: 312

Molecular Weight: 35 kDa

Gene ID: 391192

NCBI Accession: [NM_001004687](#), [NP_001004687](#)

UniProt: [Q8NGY9](#)

Application Details

Application Notes: Optimal working dilutions should be determined experimentally by the investigator.

Comment: Antigen size: 312 AA

Restrictions: For Research Use only

Handling

Format: Liquid

Concentration: Lot specific

Buffer: Liquid. Purified antibody supplied in 1x PBS buffer with 0.09 % (w/v) sodium azide and 2 % sucrose.

Preservative: Sodium azide

Precaution of Use: This product contains Sodium azide: a POISONOUS AND HAZARDOUS SUBSTANCE which should be handled by trained staff only.

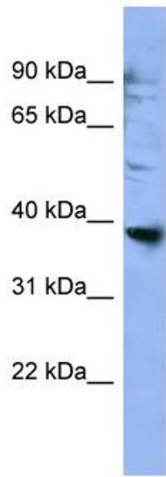
Handling Advice: Avoid repeated freeze-thaw cycles.

Storage: -20 °C

Handling

Storage Comment: For short term use, store at 2-8°C up to 1 week. For long term storage, store at -20°C in small aliquots to prevent freeze-thaw cycles.

Images

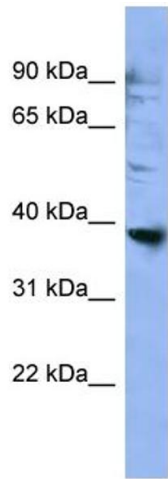


Western Blotting

Image 1. WB Suggested Anti-OR2L3 Antibody Titration:
0.2-1 ug/ml

ELISA Titer: 1:62500

Positive Control: HepG2 cell lysate



Rabbit Anti-OR2L3 Antibody
Catalog Number: ARP59737
Lot Number: QC30688
Lane: HepG2 Cell Lysate

Antibody Titration: 1.0µg/ml
Gel Concentration: 12%

Western Blotting

Image 2. WB Suggested Anti-OR2L3
Antibody Titration: 0.2-1 µg/mL ELISA Titer: 1::2500
Positive Control: HepG2 cell lysate