



[Go to Product page](#)

Datasheet for ABIN2788191

## anti-ALDH3A1 antibody (C-Term)

### 3 Images

#### Overview

Quantity:	100 µL
Target:	ALDH3A1
Binding Specificity:	C-Term
Reactivity:	Human, Mouse, Rat, Dog, Cow, Guinea Pig, Horse
Host:	Rabbit
Clonality:	Polyclonal
Conjugate:	This ALDH3A1 antibody is un-conjugated
Application:	Western Blotting (WB), Immunohistochemistry (IHC)

#### Product Details

Immunogen:	The immunogen is a synthetic peptide directed towards the C terminal region of human ALDH3A1
Sequence:	KFMNSGQTCV APDYILCDPS IQNQIVEKLLK KSLKEFYGED AKKSRDYGRI
Predicted Reactivity:	Cow: 100%, Dog: 100%, Guinea Pig: 100%, Horse: 100%, Human: 100%, Mouse: 86%, Rat: 93%
Characteristics:	This is a rabbit polyclonal antibody against ALDH3A1. It was validated on Western Blot.
Purification:	Affinity Purified

#### Target Details

Target:	ALDH3A1
Alternative Name:	ALDH3A1 ( <a href="#">ALDH3A1 Products</a> )

## Target Details

---

**Background:** Aldehyde dehydrogenases oxidize various aldehydes to the corresponding acids. They are involved in the detoxification of alcohol-derived acetaldehyde and in the metabolism of corticosteroids, biogenic amines, neurotransmitters, and lipid peroxidation. The enzyme encoded by this gene forms a cytoplasmic homodimer that preferentially oxidizes aromatic and medium-chain (6 carbons or more) saturated and unsaturated aldehyde substrates. It is thought to promote resistance to UV and 4-hydroxy-2-nonenal-induced oxidative damage in the cornea. The gene is located within the Smith-Magenis syndrome region on chromosome 17. Multiple alternatively spliced variants, encoding the same protein, have been identified.

Alias Symbols: ALDH3, ALDHIII, MGC10406

Protein Interaction Partner: WWOX, CYHR1, SRF, POT1, ALDH3A1,

Protein Size: 453

---

Molecular Weight: 50 kDa

---

Gene ID: 218

---

NCBI Accession: [NM\\_000691](#), [NP\\_000682](#)

---

UniProt: [P30838](#)

## Application Details

---

**Application Notes:** Optimal working dilutions should be determined experimentally by the investigator.

---

**Comment:** Antigen size: 453 AA

---

**Restrictions:** For Research Use only

## Handling

---

**Format:** Liquid

---

**Concentration:** Lot specific

---

**Buffer:** Liquid. Purified antibody supplied in 1x PBS buffer with 0.09 % (w/v) sodium azide and 2 % sucrose.

---

**Preservative:** Sodium azide

---

**Precaution of Use:** This product contains Sodium azide: a POISONOUS AND HAZARDOUS SUBSTANCE which should be handled by trained staff only.

---

**Handling Advice:** Avoid repeated freeze-thaw cycles.

---

**Storage:** -20 °C

---

## Handling

Storage Comment: For short term use, store at 2-8°C up to 1 week. For long term storage, store at -20°C in small aliquots to prevent freeze-thaw cycles.

## Images



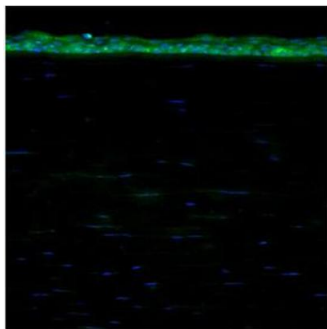
### Western Blotting

#### Image 1. WB Suggested Anti-ALDH3A1 Antibody Titration:

0.2-1 ug/ml

**ELISA Titer:** 1:62500

**Positive Control:** Human Liver



#### ALDH3A (ARP59747\_P050)

Immunohistochemistry  
Sample: Human Cornea  
Dilution: 1:200

Application data in forum

Submitted by:  
Dr. Geraint Parfitt, Yiliu Xie, Prof. James Jester  
University of California, Irvine

### Immunohistochemistry

**Image 2.** Sample Type: Human Cornea Dilution: 1:200



Rabbit Anti-ALDH3A1 Antibody  
Catalog Number: ARP59747  
Lot Number: QC30692  
Lane: Fetal Liver Lysate

Antibody Titration: 1.0µg/ml  
Gel Concentration: 12%

### Western Blotting

#### Image 3. WB Suggested Anti-ALDH3A1

Antibody Titration: 0.2-1 µg/mL ELISA Titer: 1:2500

Positive Control: Human Liver