

Datasheet for ABIN2788195
anti-BBS2 antibody (N-Term)[Go to Product page](#)

1 Image

Overview

Quantity:	100 µL
Target:	BBS2
Binding Specificity:	N-Term
Reactivity:	Human, Mouse, Rat, Dog, Cow, Horse, Rabbit, Zebrafish (Danio rerio), Guinea Pig
Host:	Rabbit
Clonality:	Polyclonal
Conjugate:	This BBS2 antibody is un-conjugated
Application:	Western Blotting (WB)

Product Details

Immunogen:	The immunogen is a synthetic peptide directed towards the N terminal region of human BBS2
Sequence:	GSDLFWTVTG DNVNSLALCD FDGDGKKELL VGSEDFDIRV FKEDEIVAEM
Predicted Reactivity:	Cow: 100%, Dog: 100%, Guinea Pig: 100%, Horse: 100%, Human: 100%, Mouse: 93%, Rabbit: 100%, Rat: 100%, Zebrafish: 79%
Characteristics:	This is a rabbit polyclonal antibody against BBS2. It was validated on Western Blot.
Purification:	Affinity Purified

Target Details

Target:	BBS2
Alternative Name:	BBS2 (BBS2 Products)

Target Details

Background:	<p>This gene is a member of the Bardet-Biedl syndrome (BBS) gene family. Bardet-Biedl syndrome is an autosomal recessive disorder characterized by severe pigmentary retinopathy, obesity, polydactyly, renal malformation and mental retardation. The proteins encoded by BBS gene family members are structurally diverse and the similar phenotypes exhibited by mutations in BBS gene family members is likely due to their shared roles in cilia formation and function. Many BBS proteins localize to the basal bodies, ciliary axonemes, and pericentriolar regions of cells. BBS proteins may also be involved in intracellular trafficking via microtubule-related transport. The protein encoded by this gene forms a multiprotein BBSome complex with six other BBS proteins.</p> <p>Alias Symbols: BBS, MGC20703</p> <p>Protein Interaction Partner: PSME3, MDFI, RBPMS, GLIS2, HSCB, FHOD1, EXOC7, PAX2, KRT18, EPAS1, EEF1A1, BHMT, ALDOB, UBC, UBD,</p> <p>Protein Size: 721</p>
Molecular Weight:	80 kDa
Gene ID:	583
NCBI Accession:	NM_031885 , NP_114091
UniProt:	Q9BXC9
Pathways:	Hedgehog Signaling

Application Details

Application Notes:	Optimal working dilutions should be determined experimentally by the investigator.
Comment:	Antigen size: 721 AA
Restrictions:	For Research Use only

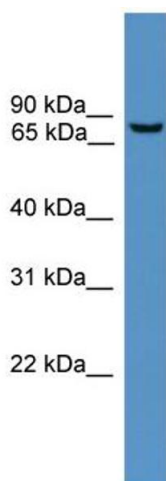
Handling

Format:	Liquid
Concentration:	Lot specific
Buffer:	Liquid. Purified antibody supplied in 1x PBS buffer with 0.09 % (w/v) sodium azide and 2 % sucrose.
Preservative:	Sodium azide
Precaution of Use:	This product contains Sodium azide: a POISONOUS AND HAZARDOUS SUBSTANCE which

Handling

	should be handled by trained staff only.
Handling Advice:	Avoid repeated freeze-thaw cycles.
Storage:	-20 °C
Storage Comment:	For short term use, store at 2-8°C up to 1 week. For long term storage, store at -20°C in small aliquots to prevent freeze-thaw cycles.

Images



Western Blotting

Image 1. WB Suggested Anti-BBS2 Antibody Titration: 1.0 ug/ml Positive Control: MCF7 Whole Cell