

Datasheet for ABIN2788202
anti-OPN1MW antibody (C-Term)[Go to Product page](#)

2 Images

Overview

Quantity:	100 µL
Target:	OPN1MW
Binding Specificity:	C-Term
Reactivity:	Human, Mouse, Rabbit, Dog, Goat, Guinea Pig, Horse, Rat, Cow, Pig, Zebrafish (Danio rerio)
Host:	Rabbit
Clonality:	Polyclonal
Conjugate:	This OPN1MW antibody is un-conjugated
Application:	Western Blotting (WB)

Product Details

Immunogen:	The immunogen is a synthetic peptide directed towards the C terminal region of human OPN1MW
Sequence:	SATIYNPVIY VFMNRQFRNC ILQLFGKKVD DGSELSSASK TEVSSVSSVS
Predicted Reactivity:	Cow: 86%, Dog: 93%, Goat: 86%, Guinea Pig: 79%, Horse: 86%, Human: 100%, Mouse: 86%, Pig: 91%, Rabbit: 86%, Rat: 93%, Zebrafish: 91%
Characteristics:	This is a rabbit polyclonal antibody against OPN1MW. It was validated on Western Blot.
Purification:	Affinity Purified

Target Details

Target:	OPN1MW
---------	--------

Target Details

Alternative Name:	OPN1MW (OPN1MW Products)
Background:	<p>This gene encodes for a light absorbing visual pigment of the opsin gene family. The encoded protein is called green cone photopigment or medium-wavelength sensitive opsin. Opsins are G-protein coupled receptors with seven transmembrane domains, an N-terminal extracellular domain, and a C-terminal cytoplasmic domain. The long-wavelength opsin gene and multiple copies of the medium-wavelength opsin gene are tandemly arrayed on the X chromosome and frequent unequal recombination and gene conversion may occur between these sequences. X chromosomes may have fusions of the medium- and long-wavelength opsin genes or may have more than one copy of these genes. Defects in this gene are the cause of deutanopic colorblindness.</p> <p>Alias Symbols: CBBM, CBD, GCP, MGC176615, MGC177321, MGC198468, MGC198469, OPN1MW1, OPN1MW2, GOP, COD5</p> <p>Protein Size: 364</p>
Molecular Weight:	40 kDa
Gene ID:	2652
NCBI Accession:	NM_000513 , NP_000504
UniProt:	P04000
Pathways:	Phototransduction

Application Details

Application Notes:	Optimal working dilutions should be determined experimentally by the investigator.
Comment:	OPN1MW Blocking Peptide ABIN5615126 is also available for use as a blocking control in assays to test for specificity of this OPN1MW antibody , Antigen size: 364 AA
Restrictions:	For Research Use only

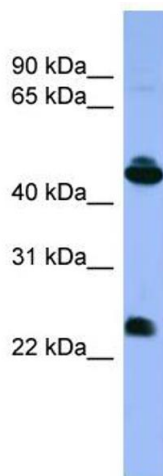
Handling

Format:	Liquid
Concentration:	Lot specific
Buffer:	Liquid. Purified antibody supplied in 1x PBS buffer with 0.09 % (w/v) sodium azide and 2 % sucrose.
Preservative:	Sodium azide

Handling

Precaution of Use:	This product contains Sodium azide: a POISONOUS AND HAZARDOUS SUBSTANCE which should be handled by trained staff only.
Handling Advice:	Avoid repeated freeze-thaw cycles.
Storage:	-20 °C
Storage Comment:	For short term use, store at 2-8°C up to 1 week. For long term storage, store at -20°C in small aliquots to prevent freeze-thaw cycles.

Images



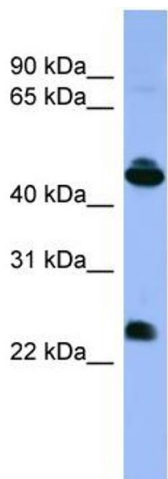
Western Blotting

Image 1. WB Suggested Anti-OPN1MW Antibody Titration:

0.2-1 ug/ml

ELISA Titer: 1:62500

Positive Control: HepG2 cell lysate



Rabbit Anti-OPN1MW Antibody
Catalog Number: ARP59764
Lot Number: QC30707
Lane: HepG2 Cell Lysate

Antibody Titration: 1.0µg/ml
Gel Concentration: 12%

Western Blotting

Image 2. WB Suggested Anti-OPN1MW

Antibody Titration: 0.2-1 µg/mL ELISA Titer: 1::2500

Positive Control: HepG2 cell lysate