

Datasheet for ABIN2788203  
**anti-GUCA1B antibody (N-Term)**[Go to Product page](#)

## 2 Images

## Overview

Quantity:	100 µL
Target:	GUCA1B
Binding Specificity:	N-Term
Reactivity:	Human, Mouse, Rat, Cow, Dog, Rabbit, Guinea Pig, Horse
Host:	Rabbit
Clonality:	Polyclonal
Conjugate:	This GUCA1B antibody is un-conjugated
Application:	Western Blotting (WB)

## Product Details

Immunogen:	The immunogen is a synthetic peptide directed towards the N terminal region of human GUCA1B
Sequence:	SGTLMHEFK RFFKVTDDDEE ASQYVEGMFR AFDKNGDNTI DFLEYVAALN
Predicted Reactivity:	Cow: 79%, Dog: 79%, Guinea Pig: 79%, Horse: 79%, Human: 100%, Mouse: 86%, Rabbit: 79%, Rat: 79%
Characteristics:	This is a rabbit polyclonal antibody against GUCA1B. It was validated on Western Blot.
Purification:	Affinity Purified

## Target Details

Target:	GUCA1B
---------	--------

## Target Details

Alternative Name:	GUCA1B ( <a href="#">GUCA1B Products</a> )
Background:	<p>The protein encoded by this gene is a calcium-binding protein that activates photoreceptor guanylate cyclases. This gene may have arisen due to a gene duplication event since there is a highly similar gene clustered with it on chromosome 6. Mutations in this gene can cause a form of retinitis pigmentosa.</p> <p>Alias Symbols: DKFZp686E1183, GCAP2, GUCA2, RP48</p> <p>Protein Interaction Partner: GUCY2D, GUCY2F,</p> <p>Protein Size: 200</p>
Molecular Weight:	23 kDa
Gene ID:	2979
NCBI Accession:	<a href="#">NM_002098</a> , <a href="#">NP_002089</a>
UniProt:	<a href="#">Q9UMX6</a>
Pathways:	<a href="#">Regulation of G-Protein Coupled Receptor Protein Signaling</a> , <a href="#">Phototransduction</a>

## Application Details

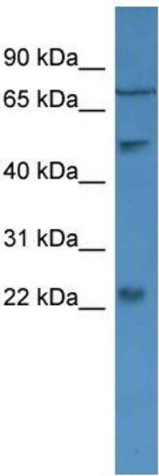
Application Notes:	Optimal working dilutions should be determined experimentally by the investigator.
Comment:	Antigen size: 200 AA
Restrictions:	For Research Use only

## Handling

Format:	Liquid
Concentration:	Lot specific
Buffer:	Liquid. Purified antibody supplied in 1x PBS buffer with 0.09 % (w/v) sodium azide and 2 % sucrose.
Preservative:	Sodium azide
Precaution of Use:	This product contains Sodium azide: a POISONOUS AND HAZARDOUS SUBSTANCE which should be handled by trained staff only.
Handling Advice:	Avoid repeated freeze-thaw cycles.
Storage:	-20 °C
Storage Comment:	For short term use, store at 2-8°C up to 1 week. For long term storage, store at -20°C in small

aliquots to prevent freeze-thaw cycles.

Images



Western Blotting

**Image 1. WB Suggested Anti-GUCA1B Antibody Titration:**

0.2-1 ug/ml

**ELISA Titer:** 1:62500

**Positive Control:** U937 cell lysate



Rabbit Anti-GUCA1B Antibody  
Catalog Number: ARP59766  
Lot Number: QC30708  
Lane: U937 Cell Lysate

Antibody Titration: 1.0µg/ml  
Gel Concentration: 12%

Western Blotting

**Image 2. WB Suggested Anti-GUCA1B**

Antibody Titration: 0.2-1 µg/mL ELISA Titer: 1::2500

Positive Control: U937 cell lysate