

Datasheet for ABIN2788204
anti-Keratin 3 antibody (C-Term)[Go to Product page](#)

2 Images

Overview

Quantity:	100 µL
Target:	Keratin 3 (KRT3)
Binding Specificity:	C-Term
Reactivity:	Human, Rabbit
Host:	Rabbit
Clonality:	Polyclonal
Conjugate:	This Keratin 3 antibody is un-conjugated
Application:	Western Blotting (WB)

Product Details

Immunogen:	The immunogen is a synthetic peptide directed towards the C terminal region of human KRT3
Sequence:	GSSGFSGGSG FGSISGARYG VSGGGFSSAS NRGGSIKFSQ SSQSSQRYSR
Predicted Reactivity:	Human: 100%, Rabbit: 79%
Characteristics:	This is a rabbit polyclonal antibody against KRT3. It was validated on Western Blot.
Purification:	Affinity Purified

Target Details

Target:	Keratin 3 (KRT3)
Alternative Name:	KRT3 (KRT3 Products)
Background:	The protein encoded by this gene is a member of the keratin gene family. The type II

Target Details

cytokeratins consist of basic or neutral proteins which are arranged in pairs of heterotypic keratin chains coexpressed during differentiation of simple and stratified epithelial tissues. This type II cytokeratin is specifically expressed in the corneal epithelium with family member KRT12 and mutations in these genes have been associated with Meesmann's Corneal Dystrophy. The type II cytokeratins are clustered in a region of chromosome 12q12-q13.

Alias Symbols: CK3, FLJ95909, K3

Protein Interaction Partner: UBC, HP1BP3, KRT14, KRT5, ITGAV, HNRNPU, SHC1, INPPL1, EPS15, CRK, AP2M1, CBL, COPS5, CUL5,

Protein Size: 628

Molecular Weight:	64 kDa
-------------------	--------

Gene ID:	3850
----------	------

NCBI Accession:	NM_057088 , NP_476429
-----------------	---

UniProt:	P12035
----------	------------------------

Application Details

Application Notes:	Optimal working dilutions should be determined experimentally by the investigator.
--------------------	--

Comment:	Antigen size: 628 AA
----------	----------------------

Restrictions:	For Research Use only
---------------	-----------------------

Handling

Format:	Liquid
---------	--------

Concentration:	Lot specific
----------------	--------------

Buffer:	Liquid. Purified antibody supplied in 1x PBS buffer with 0.09 % (w/v) sodium azide and 2 % sucrose.
---------	---

Preservative:	Sodium azide
---------------	--------------

Precaution of Use:	This product contains Sodium azide: a POISONOUS AND HAZARDOUS SUBSTANCE which should be handled by trained staff only.
--------------------	--

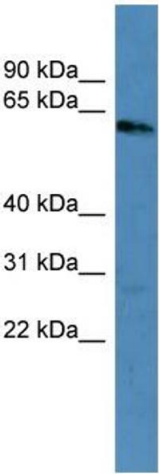
Handling Advice:	Avoid repeated freeze-thaw cycles.
------------------	------------------------------------

Storage:	-20 °C
----------	--------

Storage Comment:	For short term use, store at 2-8°C up to 1 week. For long term storage, store at -20°C in small
------------------	---

aliquots to prevent freeze-thaw cycles.

Images

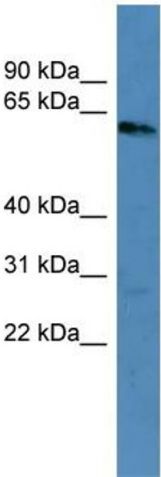


Western Blotting

Image 1. WB Suggested Anti-KRT3 Antibody Titration: 0.2-1 ug/ml

ELISA Titer: 1:62500

Positive Control: Human brain



Rabbit Anti-KRT3 Antibody
Catalog Number: ARP59767
Lot Number: QC30709
Lane: Fetal Brain Lysate

Antibody Titration: 1.0µg/ml
Gel Concentration: 12%

Western Blotting

Image 2. WB Suggested Anti-KRT3

Antibody Titration: 0.2-1 µg/mL ELISA Titer: 1::2500

Positive Control: Human brain