



Datasheet for ABIN2788208  
**anti-ALDH1A2 antibody (C-Term)**



[Go to Product page](#)

2 Images

Overview

Quantity:	100 µL
Target:	ALDH1A2
Binding Specificity:	C-Term
Reactivity:	Human, Mouse, Rat, Zebrafish (Danio rerio), Cow, Dog, Guinea Pig, Horse, Rabbit, Saccharomyces cerevisiae, Sheep
Host:	Rabbit
Clonality:	Polyclonal
Conjugate:	This ALDH1A2 antibody is un-conjugated
Application:	Western Blotting (WB)

Product Details

Immunogen:	The immunogen is a synthetic peptide directed towards the C-terminal region of Mouse Aldh1a2
Sequence:	ALMVSSAMQA GTVWINCYNA LNAQSPFGGF KMSGNGREMG EFGLREYSEV
Predicted Reactivity:	Cow: 100%, Dog: 100%, Guinea Pig: 100%, Horse: 100%, Human: 100%, Mouse: 100%, Rabbit: 100%, Rat: 100%, Sheep: 83%, Yeast: 77%, Zebrafish: 85%
Characteristics:	This is a rabbit polyclonal antibody against Aldh1a2. It was validated on Western Blot.
Purification:	Affinity Purified

Target Details

Target:	ALDH1A2
---------	---------

## Target Details

---

Alternative Name:	Aldh1a2 ( <a href="#">ALDH1A2 Products</a> )
Background:	<p>Aldh1a2 recognizes as substrates free retinal and cellular retinol-binding protein-bound retinal. It does metabolize octanal and decanal but does not metabolize citral, benzaldehyde, acetaldehyde and propanal efficiently.</p> <p>Alias Symbols: AV116159, Aldh1a7, Raldh1, Raldh2</p> <p>Protein Size: 499</p>
Molecular Weight:	55 kDa
Gene ID:	19378
NCBI Accession:	<a href="#">NM_009022</a> , <a href="#">NP_033048</a>
Pathways:	<a href="#">Retinoic Acid Receptor Signaling Pathway</a>

## Application Details

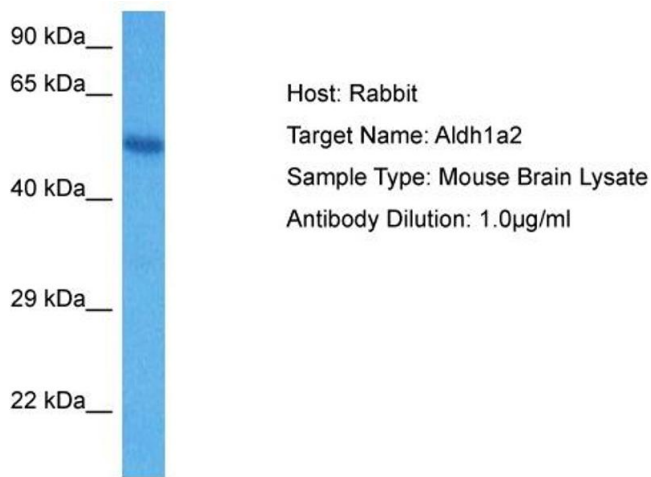
---

Application Notes:	Optimal working dilutions should be determined experimentally by the investigator.
Comment:	Antigen size: 499 AA
Restrictions:	For Research Use only

## Handling

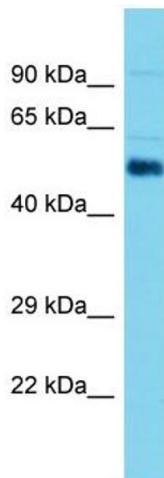
---

Format:	Liquid
Concentration:	Lot specific
Buffer:	Liquid. Purified antibody supplied in 1x PBS buffer with 0.09 % (w/v) sodium azide and 2 % sucrose.
Preservative:	Sodium azide
Precaution of Use:	This product contains Sodium azide: a POISONOUS AND HAZARDOUS SUBSTANCE which should be handled by trained staff only.
Handling Advice:	Avoid repeated freeze-thaw cycles.
Storage:	-20 °C
Storage Comment:	For short term use, store at 2-8°C up to 1 week. For long term storage, store at -20°C in small aliquots to prevent freeze-thaw cycles.



#### Western Blotting

**Image 1.** Host: Mouse Target Name: ALDH1A2 Sample Tissue: Mouse Brain Antibody Dilution: 1 ug/ml



#### Western Blotting

**Image 2.** Host: Rabbit Target Name: Aldh1a2 Sample Type: Mouse Testis lysates Antibody Dilution: 1.0ug/ml