



Datasheet for ABIN2788213  
**anti-OPN3 antibody (C-Term)**



[Go to Product page](#)

2 Images

Overview

|                      |                                     |
|----------------------|-------------------------------------|
| Quantity:            | 100 µL                              |
| Target:              | OPN3                                |
| Binding Specificity: | C-Term                              |
| Reactivity:          | Human, Guinea Pig, Horse            |
| Host:                | Rabbit                              |
| Clonality:           | Polyclonal                          |
| Conjugate:           | This OPN3 antibody is un-conjugated |
| Application:         | Western Blotting (WB)               |

Product Details

|                       |   |
|-----------------------|---|
| Immunogen:            | The immunogen is a synthetic peptide directed towards the C terminal region of human OPN3 |
| Sequence:             | IVMSQKDGDR PKKKVTFNSS SIIFIITSDE SLSVDDSDKT NGSKVDVIQV                                    |
| Predicted Reactivity: | Guinea Pig: 86%, Horse: 86%, Human: 100%  |
| Characteristics:      | This is a rabbit polyclonal antibody against OPN3. It was validated on Western Blot.      |
| Purification:         | Affinity Purified   |

Target Details

|                   |   |
|-------------------|---|
| Target:           | OPN3  |
| Alternative Name: | OPN3 ( <a href="#">OPN3 Products</a> )  |
| Background:       | Opsins are members of the guanine nucleotide-binding protein (G protein)-coupled receptor |

## Target Details

---

superfamily. In addition to the visual opsins, mammals possess several photoreceptive non-visual opsins that are expressed in extraocular tissues. This gene, opsin 3, is strongly expressed in brain and testis and weakly expressed in liver, placenta, heart, lung, skeletal muscle, kidney, and pancreas. The gene may also be expressed in the retina. The protein has the canonical features of a photoreceptive opsin protein.

Alias Symbols: ECPN

Protein Size: 402

|                   |   |
|-------------------|---|
| Molecular Weight: | 45 kDa  |
| Gene ID:          | 23596   |
| NCBI Accession:   | <a href="#">NM_014322</a> , <a href="#">NP_055137</a> |
| UniProt:          | <a href="#">Q9H1Y3</a>                                |

## Application Details

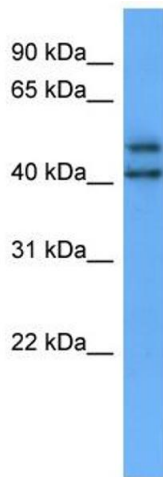
---

|                    |  |
|--------------------|--|
| Application Notes: | Optimal working dilutions should be determined experimentally by the investigator. |
| Comment:           | Antigen size: 402 AA   |
| Restrictions:      | For Research Use only  |

## Handling

---

|                    |   |
|--------------------|---|
| Format:            | Liquid  |
| Concentration:     | Lot specific  |
| Buffer:            | Liquid. Purified antibody supplied in 1x PBS buffer with 0.09 % (w/v) sodium azide and 2 % sucrose.                                     |
| Preservative:      | Sodium azide  |
| Precaution of Use: | This product contains Sodium azide: a POISONOUS AND HAZARDOUS SUBSTANCE which should be handled by trained staff only.                  |
| Handling Advice:   | Avoid repeated freeze-thaw cycles.  |
| Storage:           | -20 °C  |
| Storage Comment:   | For short term use, store at 2-8°C up to 1 week. For long term storage, store at -20°C in small aliquots to prevent freeze-thaw cycles. |



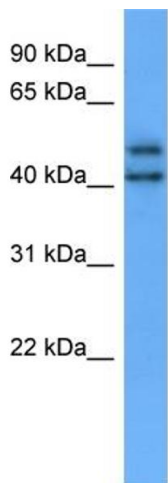
### Western Blotting

#### Image 1. WB Suggested Anti-OPN3 Antibody Titration:

0.2-1 ug/ml

**ELISA Titer:** 1:62500

**Positive Control:** 721\_B cell lysate



Rabbit Anti-OPN3 Antibody  
Catalog Number: ARP59791  
Lot Number: QC30728  
Lane: 721\_B Cell Lysate

Antibody Titration: 1.0µg/ml  
Gel Concentration: 12%

### Western Blotting

#### Image 2. WB Suggested Anti-OPN3

Antibody Titration: 0.2-1 µg/mL ELISA Titer: 1:2500

Positive Control: 21\_B cell lysate