



[Go to Product page](#)

Datasheet for ABIN2788216
anti-OR2W1 antibody (C-Term)

2 Images

Overview

Quantity:	100 µL
Target:	OR2W1
Binding Specificity:	C-Term
Reactivity:	Human, Cow, Horse, Dog, Mouse, Rat, Pig, Rabbit
Host:	Rabbit
Clonality:	Polyclonal
Conjugate:	This OR2W1 antibody is un-conjugated
Application:	Western Blotting (WB)

Product Details

Immunogen:	The immunogen is a synthetic peptide directed towards the C terminal region of human OR2W1
Sequence:	VVSMFYGTII YMYLQPGNRA SKDQGKFLTL FYTVITPSLN PLIYTLRNKD
Predicted Reactivity:	Cow: 86%, Dog: 86%, Horse: 93%, Human: 100%, Mouse: 100%, Pig: 93%, Rabbit: 93%, Rat: 100%
Characteristics:	This is a rabbit polyclonal antibody against OR2W1. It was validated on Western Blot.
Purification:	Affinity Purified

Target Details

Target:	OR2W1
Alternative Name:	OR2W1 (OR2W1 Products)
Background:	Olfactory receptors interact with odorant molecules in the nose, to initiate a neuronal response

Target Details

that triggers the perception of a smell. The olfactory receptor proteins are members of a large family of G-protein-coupled receptors (GPCR) arising from single coding-exon genes. Olfactory receptors share a 7-transmembrane domain structure with many neurotransmitter and hormone receptors and are responsible for the recognition and G protein-mediated transduction of odorant signals. The olfactory receptor gene family is the largest in the genome. The nomenclature assigned to the olfactory receptor genes and proteins for this organism is independent of other organisms.

Alias Symbols: MGC119162, MGC119163, MGC119165, hs6M1-15

Protein Interaction Partner: APP,

Protein Size: 320

Molecular Weight:	36 kDa
Gene ID:	26692
NCBI Accession:	NM_030903 , NP_112165
UniProt:	Q9Y3N9

Application Details

Application Notes:	Optimal working dilutions should be determined experimentally by the investigator.
Comment:	Antigen size: 320 AA
Restrictions:	For Research Use only

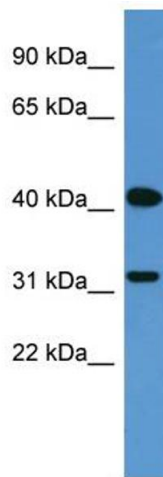
Handling

Format:	Liquid
Concentration:	Lot specific
Buffer:	Liquid. Purified antibody supplied in 1x PBS buffer with 0.09 % (w/v) sodium azide and 2 % sucrose.
Preservative:	Sodium azide
Precaution of Use:	This product contains Sodium azide: a POISONOUS AND HAZARDOUS SUBSTANCE which should be handled by trained staff only.
Handling Advice:	Avoid repeated freeze-thaw cycles.
Storage:	-20 °C

Handling

Storage Comment: For short term use, store at 2-8°C up to 1 week. For long term storage, store at -20°C in small aliquots to prevent freeze-thaw cycles.

Images



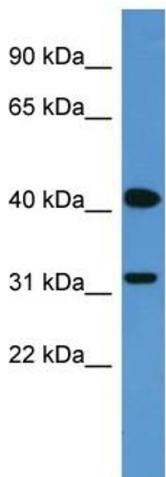
Western Blotting

Image 1. WB Suggested Anti-OR2W1 Antibody Titration:

0.2-1 ug/ml

ELISA Titer: 1:62500

Positive Control: Human Lung



Rabbit Anti-OR2W1 Antibody
Catalog Number: ARP59797
Lot Number: QC30732
Lane: Fetal Lung Lysate

Antibody Titration: 1.0µg/ml
Gel Concentration: 12%

Western Blotting

Image 2. WB Suggested Anti-OR2W1

Antibody Titration: 0.2-1 µg/mL ELISA Titer: 1::2500

Positive Control: Human Lung