

Datasheet for ABIN2788222
anti-NETO1 antibody (C-Term)



[Go to Product page](#)

2 Images

Overview

Quantity:	100 µL
Target:	NETO1
Binding Specificity:	C-Term
Reactivity:	Human, Mouse, Rat, Zebrafish (Danio rerio), Cow, Rabbit, Dog, Guinea Pig, Horse
Host:	Rabbit
Clonality:	Polyclonal
Conjugate:	This NETO1 antibody is un-conjugated
Application:	Western Blotting (WB), Immunohistochemistry (IHC)

Product Details

Immunogen:	The immunogen is a synthetic peptide directed towards the C terminal region of human NETO1
Sequence:	MCINNTLVCN GLQNCVYPWD ENHCCKEKRKT SLLDQLTNTS GTVIGVTSCI
Predicted Reactivity:	Cow: 86%, Dog: 93%, Guinea Pig: 93%, Horse: 93%, Human: 100%, Mouse: 100%, Rabbit: 100%, Rat: 100%, Zebrafish: 100%
Characteristics:	This is a rabbit polyclonal antibody against NETO1. It was validated on Western Blot.
Purification:	Affinity Purified

Target Details

Target:	NETO1
Alternative Name:	NETO1 (NETO1 Products)

Target Details

Background:	<p>This gene encodes a predicted transmembrane protein containing two extracellular CUB domains followed by a low-density lipoprotein class A (LDLa) domain. A similar gene in mice encodes a protein that plays a critical role in spatial learning and memory by regulating the function of synaptic N-methyl-D-aspartic acid receptor complexes in the hippocampus. Alternatively spliced transcript variants encoding multiple isoforms have been observed for this gene.</p> <p>Alias Symbols: BCTL1, BTCL1</p> <p>Protein Interaction Partner: BAG3,</p> <p>Protein Size: 533</p>
Molecular Weight:	60 kDa
Gene ID:	81832
NCBI Accession:	NM_138966 , NP_620416
UniProt:	Q8R417
Pathways:	Regulation of long-term Neuronal Synaptic Plasticity

Application Details

Application Notes:	Optimal working dilutions should be determined experimentally by the investigator.
Comment:	Antigen size: 533 AA
Restrictions:	For Research Use only

Handling

Format:	Liquid
Concentration:	Lot specific
Buffer:	Liquid. Purified antibody supplied in 1x PBS buffer with 0.09 % (w/v) sodium azide and 2 % sucrose.
Preservative:	Sodium azide
Precaution of Use:	This product contains Sodium azide: a POISONOUS AND HAZARDOUS SUBSTANCE which should be handled by trained staff only.
Handling Advice:	Avoid repeated freeze-thaw cycles.
Storage:	-20 °C

Handling

Storage Comment: For short term use, store at 2-8°C up to 1 week. For long term storage, store at -20°C in small aliquots to prevent freeze-thaw cycles.

Images



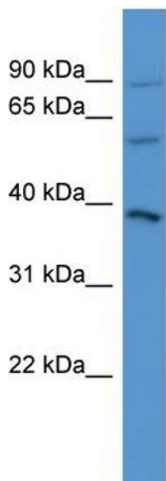
Western Blotting

Image 1. WB Suggested Anti-NETO1 Antibody Titration:

0.2-1 ug/ml

ELISA Titer: 1:62500

Positive Control: 721_B cell lysate



Rabbit Anti-NETO1 Antibody
Catalog Number: ARP59810
Lot Number: QC30743
Lane: 721_B Cell Lysate

Antibody Titration: 1.0µg/ml
Gel Concentration: 12%

Western Blotting

Image 2. WB Suggested Anti-NETO1

Antibody Titration: 0.2-1 µg/mL ELISA Titer: 1::2500

Positive Control: 21_B cell lysate