

Datasheet for ABIN2788235
anti-GPR123 antibody (C-Term)[Go to Product page](#)

1 Image

Overview

| | |
|----------------------|---|
| Quantity: | 100 µL |
| Target: | GPR123 |
| Binding Specificity: | C-Term |
| Reactivity: | Human, Rat, Cow, Dog, Guinea Pig, Horse, Rabbit |
| Host: | Rabbit |
| Clonality: | Polyclonal |
| Conjugate: | This GPR123 antibody is un-conjugated |
| Application: | Western Blotting (WB) |

Product Details

| | |
|-----------------------|---|
| Immunogen: | The immunogen is a synthetic peptide directed towards the C-terminal region of Human GPR123 |
| Sequence: | YHIPSSLDGS PRSSRTDSPP SSLDGPAGTH TLACCTQGDG FPMVTQPEGS |
| Predicted Reactivity: | Cow: 79%, Dog: 93%, Guinea Pig: 93%, Horse: 93%, Human: 100%, Rabbit: 93%, Rat: 85% |
| Characteristics: | This is a rabbit polyclonal antibody against GPR123. It was validated on Western Blot. |
| Purification: | Affinity Purified |

Target Details

| | |
|-------------------|--|
| Target: | GPR123 |
| Alternative Name: | GPR123 (GPR123 Products) |

Target Details

| | |
|-------------|---|
| Background: | GPR123 is a orphan receptor. Protein Size: 463 |
|-------------|---|

| | |
|-------------------|--------|
| Molecular Weight: | 50 kDa |
|-------------------|--------|

| | |
|----------|-------|
| Gene ID: | 84435 |
|----------|-------|

Application Details

| | |
|---------------|-----------------------|
| Restrictions: | For Research Use only |
|---------------|-----------------------|

Handling

| | |
|---------|--------|
| Format: | Liquid |
|---------|--------|

| | |
|----------------|---------|
| Concentration: | 1 mg/mL |
|----------------|---------|

| | |
|---------|---|
| Buffer: | Liquid. Purified antibody supplied in 1x PBS buffer with 0.09 % (w/v) sodium azide and 2 % sucrose. |
|---------|---|

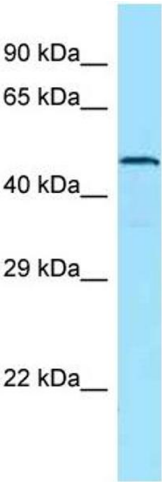
| | |
|---------------|--------------|
| Preservative: | Sodium azide |
|---------------|--------------|

| | |
|--------------------|--|
| Precaution of Use: | This product contains Sodium azide: a POISONOUS AND HAZARDOUS SUBSTANCE which should be handled by trained staff only. |
|--------------------|--|

| | |
|------------------|----------------------------------|
| Handling Advice: | Avoid repeat freeze-thaw cycles. |
|------------------|----------------------------------|

| | |
|----------|--------|
| Storage: | -20 °C |
|----------|--------|

| | |
|------------------|---|
| Storage Comment: | For short term use, store at 2-8°C up to 1 week. For long term storage, store at -20°C in small aliquots to prevent freeze-thaw cycles. |
|------------------|---|



Western Blotting

Image 1.