

Datasheet for ABIN2788236
anti-HHIPL1 antibody (C-Term)[Go to Product page](#)

2 Images

Overview

Quantity:	100 µL
Target:	HHIPL1
Binding Specificity:	C-Term
Reactivity:	Human, Cow, Dog, Guinea Pig, Pig, Rabbit, Rat, Horse, Mouse, Zebrafish (Danio rerio)
Host:	Rabbit
Clonality:	Polyclonal
Conjugate:	This HHIPL1 antibody is un-conjugated
Application:	Western Blotting (WB)

Product Details

Immunogen:	The immunogen is a synthetic peptide directed towards the C terminal region of human HHIPL1
Sequence:	EFGQGGSLPI LLDDVRCAGW ERNLLECQHN GVGTHNCEHD EDAGVVCSHQ
Predicted Reactivity:	Cow: 85%, Dog: 86%, Guinea Pig: 86%, Horse: 92%, Human: 100%, Mouse: 92%, Pig: 91%, Rabbit: 85%, Rat: 92%, Zebrafish: 86%
Characteristics:	This is a rabbit polyclonal antibody against HHIPL1. It was validated on Western Blot.
Purification:	Affinity Purified

Target Details

Target:	HHIPL1
---------	--------

Target Details

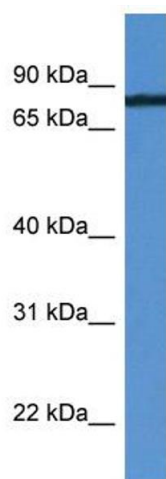
Alternative Name:	HHIPL1 (HHIPL1 Products)
Background:	The function of this protein remains unknown. Alias Symbols: KIAA1822, UNQ9245 Protein Size: 782
Molecular Weight:	85 kDa
Gene ID:	84439
NCBI Accession:	NM_001127258 , NP_001120730
UniProt:	Q96JK4

Application Details

Application Notes:	Optimal working dilutions should be determined experimentally by the investigator.
Comment:	Antigen size: 782 AA
Restrictions:	For Research Use only

Handling

Format:	Liquid
Concentration:	Lot specific
Buffer:	Liquid. Purified antibody supplied in 1x PBS buffer with 0.09 % (w/v) sodium azide and 2 % sucrose.
Preservative:	Sodium azide
Precaution of Use:	This product contains Sodium azide: a POISONOUS AND HAZARDOUS SUBSTANCE which should be handled by trained staff only.
Handling Advice:	Avoid repeated freeze-thaw cycles.
Storage:	-20 °C
Storage Comment:	For short term use, store at 2-8°C up to 1 week. For long term storage, store at -20°C in small aliquots to prevent freeze-thaw cycles.



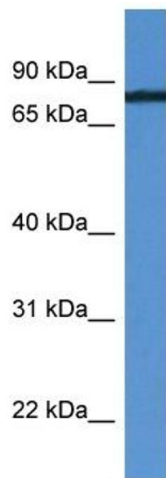
Western Blotting

Image 1. WB Suggested Anti-HHIPL1 Antibody Titration:

0.2-1 ug/ml

ELISA Titer: 1:62500

Positive Control: MDA-MB-435S cell lysate



Rabbit Anti-HHIPL1 Antibody
Catalog Number: ARP59843
Lot Number: QC31049
Lane: MDA-MB-435S Cell Lysate

Antibody Titration: 1.0µg/ml
Gel Concentration: 12%

Western Blotting

Image 2. WB Suggested Anti-HHIPL1

Antibody Titration: 0.2-1 µg/mL ELISA Titer: 1::2500

Positive Control: MDA-MB-435S cell lysate