

Datasheet for ABIN2788238  
**anti-PHYHIPL antibody (C-Term)**[Go to Product page](#)

## 1 Image

## Overview

Quantity:	100 µL
Target:	PHYHIPL
Binding Specificity:	C-Term
Reactivity:	Human, Mouse, Rat, Cow, Dog, Guinea Pig, Horse, Rabbit, Zebrafish (Danio rerio)
Host:	Rabbit
Clonality:	Polyclonal
Conjugate:	This PHYHIPL antibody is un-conjugated
Application:	Western Blotting (WB)

## Product Details

Immunogen:	The immunogen is a synthetic peptide directed towards the C terminal region of human PHYHIPL
Sequence:	QDVILEVIYT DPVDLSVGTV AEITGHLMS LSTANAKKDP SCKTCNISVG
Predicted Reactivity:	Cow: 100%, Dog: 100%, Guinea Pig: 100%, Horse: 100%, Human: 100%, Mouse: 100%, Rabbit: 93%, Rat: 100%, Zebrafish: 100%
Characteristics:	This is a rabbit polyclonal antibody against PHYHIPL. It was validated on Western Blot.
Purification:	Affinity Purified

## Target Details

Target:	PHYHIPL
---------	---------

## Target Details

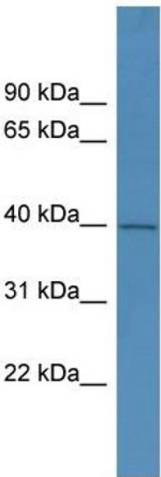
Alternative Name:	PHYHIPL ( <a href="#">PHYHIPL Products</a> )
Background:	PHYHIPL may play a role in the development of the central system. Alias Symbols: KIAA1796 Protein Interaction Partner: PDE9A, Protein Size: 376
Molecular Weight:	42 kDa
Gene ID:	84457
NCBI Accession:	<a href="#">NM_032439</a> , <a href="#">NP_115815</a>
UniProt:	<a href="#">Q96FC7</a>

## Application Details

Application Notes:	Optimal working dilutions should be determined experimentally by the investigator.
Comment:	Antigen size: 376 AA
Restrictions:	For Research Use only

## Handling

Format:	Liquid
Concentration:	Lot specific
Buffer:	Liquid. Purified antibody supplied in 1x PBS buffer with 0.09 % (w/v) sodium azide and 2 % sucrose.
Preservative:	Sodium azide
Precaution of Use:	This product contains Sodium azide: a POISONOUS AND HAZARDOUS SUBSTANCE which should be handled by trained staff only.
Handling Advice:	Avoid repeated freeze-thaw cycles.
Storage:	-20 °C
Storage Comment:	For short term use, store at 2-8°C up to 1 week. For long term storage, store at -20°C in small aliquots to prevent freeze-thaw cycles.



Western Blotting

**Image 1.** WB Suggested Anti-PHYHIPL Antibody Titration:  
0.2-1 ug/ml ELISA Titer: 1:62500 Positive Control: Hela cell lysate