



[Go to Product page](#)

Datasheet for ABIN2788239

## anti-BTBD12 antibody (N-Term)

### 2 Images

#### Overview

Quantity:	100 µL
Target:	BTBD12
Binding Specificity:	N-Term
Reactivity:	Human, Rabbit
Host:	Rabbit
Clonality:	Polyclonal
Conjugate:	This BTBD12 antibody is un-conjugated
Application:	Western Blotting (WB)

#### Product Details

Immunogen:	The immunogen is a synthetic peptide directed towards the N terminal region of human BTBD12
Sequence:	TKTLQGPAEK KPPSGSQAPR TKKQRVTKWQ ASEPAHSVNG EGGVLASAPD
Predicted Reactivity:	Human: 100%, Rabbit: 91%
Characteristics:	This is a rabbit polyclonal antibody against BTBD12. It was validated on Western Blot.
Purification:	Affinity Purified

#### Target Details

Target:	BTBD12
Alternative Name:	BTBD12 ( <a href="#">BTBD12 Products</a> )

## Target Details

---

**Background:** This gene encodes a structure-specific endonuclease subunit. The encoded protein contains a central BTB domain and it forms a multiprotein complex with the ERCC4(XPF)-ERCC1, MUS81-EME1, and SLX1 endonucleases, and also associates with MSH2/MSH3 mismatch repair complex, telomere binding complex TERF2(TRF2)-TERF2IP(RAP1), the protein kinase PLK1 and the uncharacterized protein C20orf94. The multiprotein complex is required for repair of specific types of DNA lesions and is critical for cellular responses to replication fork failure. The encoded protein acts as a docking platform for the assembly of multiple structure-specific endonucleases.

Alias Symbols: KIAA1784, KIAA1987, MUS312, SLX4, FANCP, BTBD12

Protein Interaction Partner: MUS81, vpr, SLX1A, SLX1B, DCLRE1B, TERF2, ERCC4, UBC, ERCC1, APP, EME1, PCNA, MSH2, MSH6, DDB1, SLX4IP, SPRTN, TERF2IP, VCP, PLK1, SUMO2, PGAM5, DCAF10, LRRC1, GID8, TEX10, GLTSCR2, NUP188, NUP50, PNMA2, TSPYL1, PSMB4, MSH3, KPNA1,

Protein Size: 1834

---

Molecular Weight: 200 kDa

---

Gene ID: 84464

---

NCBI Accession: [NM\\_032444](#), [NP\\_115820](#)

---

UniProt: [Q8IY92](#)

---

Pathways: [DNA Damage Repair](#)

## Application Details

---

Application Notes: Optimal working dilutions should be determined experimentally by the investigator.

---

Comment: Antigen size: 1834 AA

---

Restrictions: For Research Use only

## Handling

---

Format: Liquid

---

Concentration: Lot specific

---

Buffer: Liquid. Purified antibody supplied in 1x PBS buffer with 0.09 % (w/v) sodium azide and 2 % sucrose.

---

Preservative: Sodium azide

---

## Handling

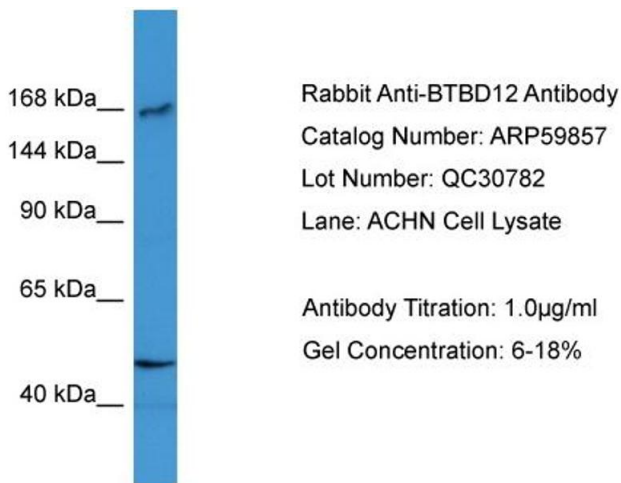
Precaution of Use: This product contains Sodium azide: a POISONOUS AND HAZARDOUS SUBSTANCE which should be handled by trained staff only.

Handling Advice: Avoid repeated freeze-thaw cycles.

Storage: -20 °C

Storage Comment: For short term use, store at 2-8°C up to 1 week. For long term storage, store at -20°C in small aliquots to prevent freeze-thaw cycles.

## Images

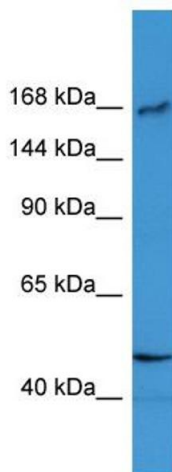


### Western Blotting

**Image 1.** WB Suggested Anti-BTBD12

Antibody Titration: 0.2-1 µg/mL ELISA Titer: 1:1562500

Positive Control: ACHN cell lysate



### Western Blotting

**Image 2. WB Suggested Anti-BTBD12 Antibody Titration:**

0.2-1 ug/ml

**ELISA Titer:** 1:1562500

**Positive Control:** ACHN cell lysate