

Datasheet for ABIN2788246
anti-FATE1 antibody (N-Term)[Go to Product page](#)

2 Images

Overview

Quantity:	100 µL
Target:	FATE1
Binding Specificity:	N-Term
Reactivity:	Human
Host:	Rabbit
Clonality:	Polyclonal
Conjugate:	This FATE1 antibody is un-conjugated
Application:	Western Blotting (WB)

Product Details

Immunogen:	The immunogen is a synthetic peptide directed towards the N terminal region of human FATE1
Sequence:	PNTKAEMEMS LAEELNHGRQ GENQEHLVIA EMMELGSRSR GASQKKQKLE
Predicted Reactivity:	Human: 100%
Characteristics:	This is a rabbit polyclonal antibody against FATE1. It was validated on Western Blot.
Purification:	Affinity Purified

Target Details

Target:	FATE1
Alternative Name:	FATE1 (FATE1 Products)
Background:	This gene encodes a cancer-testis antigen that is highly expressed in hepatocellular

Target Details

carcinomas and other tumors and weakly expressed in normal tissues except testis. The protein is strongly expressed in spermatogonia, primary spermatocytes, and Sertoli cells in seminiferous tubules. This protein may have a role in the control of early testicular differentiation and cell proliferation.

Alias Symbols: CT43, FATE

Protein Interaction Partner: SYNE4, TMEM74, CCDC155, NRG4, NRSN1, SYNPR, SNAP47, DCTN5, YIPF4, CCDC70, SLC38A1, TRAF3IP3, SYNDIG1, AGTRAP, RPRM, MARCH5, NDUFB11, INPP5K, TIMMDC1, MARCH2, SEC22A, USP20, SEC23B, BTN2A2, CD302, SYNGR1, SEC22C, BSND, TM4SF4, SLC7A1, PRRG2, PIN4, LNPEP, K

Protein Size: 183

Molecular Weight: 21 kDa

Gene ID: 89885

NCBI Accession: [NM_033085](#), [NP_149076](#)

UniProt: [Q969F0](#)

Application Details

Application Notes: Optimal working dilutions should be determined experimentally by the investigator.

Comment: Antigen size: 183 AA

Restrictions: For Research Use only

Handling

Format: Liquid

Concentration: Lot specific

Buffer: Liquid. Purified antibody supplied in 1x PBS buffer with 0.09 % (w/v) sodium azide and 2 % sucrose.

Preservative: Sodium azide

Precaution of Use: This product contains Sodium azide: a POISONOUS AND HAZARDOUS SUBSTANCE which should be handled by trained staff only.

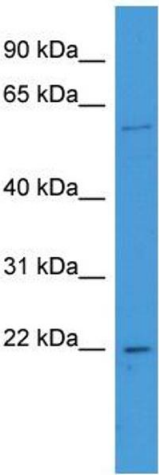
Handling Advice: Avoid repeated freeze-thaw cycles.

Storage: -20 °C

Handling

Storage Comment: For short term use, store at 2-8°C up to 1 week. For long term storage, store at -20°C in small aliquots to prevent freeze-thaw cycles.

Images



Western Blotting

Image 1. WB Suggested Anti-FATE1 Antibody Titration:

0.2-1 ug/ml

ELISA Titer: 1:62500

Positive Control: Human kidney



Rabbit Anti-FATE1 Antibody
Catalog Number: ARP59872
Lot Number: QC30794
Lane: Fetal Kidney Lysate

Antibody Titration: 1.0µg/ml
Gel Concentration: 12%

Western Blotting

Image 2. WB Suggested Anti-FATE1

Antibody Titration: 0.2-1 µg/mL ELISA Titer: 1::2500

Positive Control: Human kidney