

Datasheet for ABIN2788247
anti-IGSF8 antibody (Middle Region)[Go to Product page](#)

2 Images

Overview

Quantity:	100 µL
Target:	IGSF8
Binding Specificity:	Middle Region
Reactivity:	Human, Mouse, Cow, Pig, Rabbit, Dog, Guinea Pig
Host:	Rabbit
Clonality:	Polyclonal
Conjugate:	This IGSF8 antibody is un-conjugated
Application:	Western Blotting (WB)

Product Details

Immunogen:	The immunogen is a synthetic peptide directed towards the middle region of human IGSF8
Sequence:	LAVEAGAPYA ERLAAGELRL GKEGTDYRM VVGGAQAGDA GTYHCTAAEW
Predicted Reactivity:	Cow: 86%, Dog: 79%, Guinea Pig: 83%, Human: 100%, Mouse: 93%, Pig: 93%, Rabbit: 93%
Characteristics:	This is a rabbit polyclonal antibody against IGSF8. It was validated on Western Blot.
Purification:	Affinity Purified

Target Details

Target:	IGSF8
Alternative Name:	IGSF8 (IGSF8 Products)
Background:	IGSF8 may play a key role in diverse functions ascribed to CD81 and CD9 such as oocytes

Target Details

fertilization or hepatitis C virus function. IGSF8 may regulate proliferation and differentiation of keratinocytes. IGSF8 may be a negative regulator of cell motility: suppresses T-cell mobility coordinately with CD81, associates with CD82 to suppress prostate cancer cell migration, regulates epidermoid cell reaggregation and motility on laminin-5 with CD9 and CD81 as key linkers. IGSF8 may also play a role on integrin-dependent morphology and motility functions. IGSF8 may participate in the regulation of neurite outgrowth and maintenance of the neural network in the adult brain.

Alias Symbols: CD316, CD81P3, EWI2, PGRL, EWI-2, KCT-4, LIR-D1

Protein Interaction Partner: KRTAP10-3, KRTAP10-8, KRTAP10-9, KRTAP10-7, KRTAP10-4, UBC, FBXO6, HIST1H2BK, TUBB6, TUBB7P, VPS35, TUBA8, EIF3L, TUBE1, RPL26L1, YBX2, EIF3K, LSM3, PDCCD4, PABPC1, IBTK, RPL36, RPL13A, SF3B3, RPL35, SUPT16H, SRSF8, PRPF8, CCT4, ANP32B, DDX17, SYNCRIP, TUB

Protein Size: 613

Molecular Weight: 65 kDa

Gene ID: 93185

NCBI Accession: [NM_052868](#), [NP_443100](#)

UniProt: [Q969P0](#)

Application Details

Application Notes: Optimal working dilutions should be determined experimentally by the investigator.

Comment: Antigen size: 613 AA

Restrictions: For Research Use only

Handling

Format: Liquid

Concentration: Lot specific

Buffer: Liquid. Purified antibody supplied in 1x PBS buffer with 0.09 % (w/v) sodium azide and 2 % sucrose.

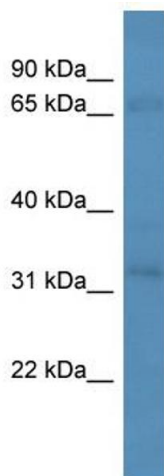
Preservative: Sodium azide

Precaution of Use: This product contains Sodium azide: a POISONOUS AND HAZARDOUS SUBSTANCE which should be handled by trained staff only.

Handling

Handling Advice:	Avoid repeated freeze-thaw cycles.
Storage:	-20 °C
Storage Comment:	For short term use, store at 2-8°C up to 1 week. For long term storage, store at -20°C in small aliquots to prevent freeze-thaw cycles.

Images



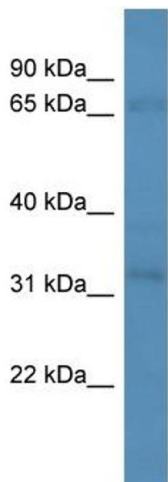
Western Blotting

Image 1. WB Suggested Anti-IGSF8 Antibody Titration:

0.2-1 ug/ml

ELISA Titer: 1:62500

Positive Control: 721_B cell lysate



Rabbit Anti-IGSF8 Antibody
Catalog Number: ARP59875
Lot Number: QC30797
Lane: 721_B Cell Lysate

Antibody Titration: 1.0µg/ml
Gel Concentration: 12%

Western Blotting

Image 2. WB Suggested Anti-IGSF8

Antibody Titration: 0.2-1 µg/mL ELISA Titer: 1::2500

Positive Control:.21_B cell lysate