

Datasheet for ABIN2788254
anti-Septin 1 antibody (N-Term)[Go to Product page](#)

2 Images

Overview

Quantity:	100 µL
Target:	Septin 1 (SEPT1)
Binding Specificity:	N-Term
Reactivity:	Human, Mouse, Rat, Cow, Dog, Horse, Guinea Pig, Rabbit, Zebrafish (Danio rerio)
Host:	Rabbit
Clonality:	Polyclonal
Conjugate:	This Septin 1 antibody is un-conjugated
Application:	Western Blotting (WB)

Product Details

Immunogen:	The immunogen is a synthetic peptide directed towards the N terminal region of human SEPT1
Sequence:	FGDSVDCSDC WLPVVKFIEE QFEQYLRDES GLNRKNIQDS RVHCCLYFIS
Predicted Reactivity:	Cow: 100%, Dog: 100%, Guinea Pig: 100%, Horse: 100%, Human: 100%, Mouse: 100%, Rabbit: 93%, Rat: 100%, Zebrafish: 93%
Characteristics:	This is a rabbit polyclonal antibody against SEPT1. It was validated on Western Blot.
Purification:	Affinity Purified

Target Details

Target:	Septin 1 (SEPT1)
Alternative Name:	SEPT1 (SEPT1 Products)

Target Details

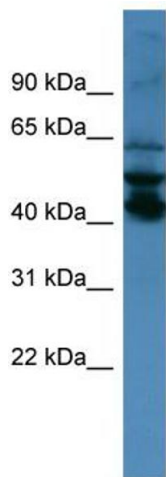
Background:	<p>This gene is a member of the septin family of GTPases. Members of this family are required for cytokinesis and the maintenance of cellular morphology. This gene encodes a protein that can form homo- and heterooligomeric filaments, and may contribute to the formation of neurofibrillary tangles in Alzheimer's disease.</p> <p>Alias Symbols: DIFF6, LARP, MGC20394, PNUTL3, SEP1</p> <p>Protein Interaction Partner: AMOT, SEPT12, TEX11, SEPT6, SEPT5, SEPT1, UBC, AURKB, APP, RAD21, TOLLIP,</p> <p>Protein Size: 367</p>
Molecular Weight:	42 kDa
Gene ID:	1731
NCBI Accession:	NM_052838 , NP_443070
UniProt:	Q8WYJ6

Application Details

Application Notes:	Optimal working dilutions should be determined experimentally by the investigator.
Comment:	Antigen size: 367 AA
Restrictions:	For Research Use only

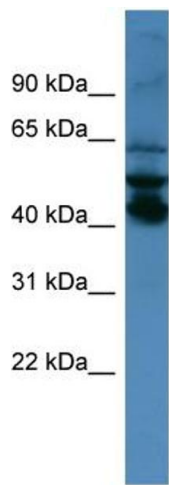
Handling

Format:	Liquid
Concentration:	Lot specific
Buffer:	Liquid. Purified antibody supplied in 1x PBS buffer with 0.09 % (w/v) sodium azide and 2 % sucrose.
Preservative:	Sodium azide
Precaution of Use:	This product contains Sodium azide: a POISONOUS AND HAZARDOUS SUBSTANCE which should be handled by trained staff only.
Handling Advice:	Avoid repeated freeze-thaw cycles.
Storage:	-20 °C
Storage Comment:	For short term use, store at 2-8°C up to 1 week. For long term storage, store at -20°C in small aliquots to prevent freeze-thaw cycles.



Western Blotting

Image 1. WB Suggested Anti-SEPT1 Antibody Titration:
0.2-1 ug/ml
ELISA Titer: 1:62500
Positive Control: NCI-H226 cell lysate



Rabbit Anti-SEPT1 Antibody
Catalog Number: ARP59897
Lot Number: QC30813
Lane: NCI-H226 Cell Lysate

Antibody Titration: 1.0µg/ml
Gel Concentration: 12%

Western Blotting

Image 2. WB Suggested Anti-SEPT1
Antibody Titration: 0.2-1 µg/mL ELISA Titer: 1::2500
Positive Control: NCI-H226 cell lysate