

Datasheet for ABIN2788258

## anti-Rho-related GTP-binding protein antibody (C-Term)



[Go to Product page](#)

### 1 Image

#### Overview

Quantity:	100 µL
Target:	Rho-related GTP-binding protein (RhO (pan))
Binding Specificity:	C-Term
Reactivity:	Human, Mouse, Rat, Cow, Dog, Guinea Pig, Rabbit, Sheep
Host:	Rabbit
Clonality:	Polyclonal
Conjugate:	This Rho-related GTP-binding protein antibody is un-conjugated
Application:	Western Blotting (WB)

#### Product Details

Immunogen:	The immunogen is a synthetic peptide directed towards the C terminal region of human RHO
Sequence:	AFFAKSAAIY NPVIYIMMNK QFRNCMLTTI CCGKNPLGDD EASATVSKTE
Predicted Reactivity:	Cow: 93%, Dog: 86%, Guinea Pig: 93%, Human: 100%, Mouse: 86%, Rabbit: 93%, Rat: 93%, Sheep: 93%
Characteristics:	This is a rabbit polyclonal antibody against RHO. It was validated on Western Blot.
Purification:	Affinity Purified

#### Target Details

Target:	Rho-related GTP-binding protein (RhO (pan))
Alternative Name:	RHO ( <a href="#">RhO (pan) Products</a> )

## Target Details

---

Target Type:	Chemical
Background:	<p>Retinitis pigmentosa is an inherited progressive disease which is a major cause of blindness in western communities. It can be inherited as an autosomal dominant, autosomal recessive, or X-linked recessive disorder. In the autosomal dominant form, which comprises about 25 % of total cases, approximately 30 % of families have mutations in the gene encoding the rod photoreceptor-specific protein rhodopsin. This is the transmembrane protein which, when photoexcited, initiates the visual transduction cascade. Defects in this gene are also one of the causes of congenital stationary night blindness.</p> <p>Alias Symbols: CSNBAD1, MGC138309, MGC138311, OPN2, RP4</p> <p>Protein Interaction Partner: DERL1, EDEM1, VCP, UBC, HSPA4, DNAJB2, RHO, PPP2CA, GRK5, GRK6, ARR3, GNGT1, SAG, GRK1, PRKCA, ADRBK1,</p> <p>Protein Size: 348</p>
Molecular Weight:	39 kDa
Gene ID:	6010
NCBI Accession:	<a href="#">NM_000539</a> , <a href="#">NP_000530</a>
UniProt:	<a href="#">P08100</a>

## Application Details

---

Application Notes:	Optimal working dilutions should be determined experimentally by the investigator.
Comment:	Antigen size: 348 AA
Restrictions:	For Research Use only

## Handling

---

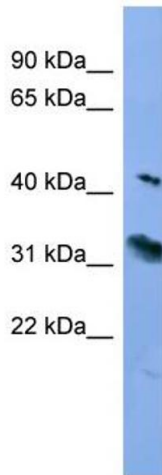
Format:	Liquid
Concentration:	Lot specific
Buffer:	Liquid. Purified antibody supplied in 1x PBS buffer with 0.09 % (w/v) sodium azide and 2 % sucrose.
Preservative:	Sodium azide
Precaution of Use:	This product contains Sodium azide: a POISONOUS AND HAZARDOUS SUBSTANCE which should be handled by trained staff only.
Handling Advice:	Avoid repeated freeze-thaw cycles.

## Handling

Storage: -20 °C

Storage Comment: For short term use, store at 2-8°C up to 1 week. For long term storage, store at -20°C in small aliquots to prevent freeze-thaw cycles.

## Images



### Western Blotting

**Image 1.** WB Suggested Anti-RHO Antibody Titration: 0.2-1 ug/ml ELISA Titer: 1:62500 Positive Control: Human Placenta