

Datasheet for ABIN2788266  
**anti-BASP1 antibody (N-Term)**[Go to Product page](#)

## 2 Images

## Overview

Quantity:	100 µL
Target:	BASP1
Binding Specificity:	N-Term
Reactivity:	Human, Mouse, Rat, Rabbit, Saccharomyces cerevisiae, Cow, Guinea Pig, Dog, Horse
Host:	Rabbit
Clonality:	Polyclonal
Conjugate:	This BASP1 antibody is un-conjugated
Application:	Western Blotting (WB)

## Product Details

Immunogen:	The immunogen is a synthetic peptide directed towards the N terminal region of human BASP1
Sequence:	AKEGKEKPDQ DAEGKAEKE GEKDAAAAKE EAPKAEPEKT EGAAEAKAEP
Predicted Reactivity:	Cow: 86%, Dog: 86%, Guinea Pig: 100%, Horse: 86%, Human: 100%, Mouse: 93%, Rabbit: 100%, Rat: 100%, Yeast: 85%
Characteristics:	This is a rabbit polyclonal antibody against BASP1. It was validated on Western Blot.
Purification:	Affinity Purified

## Target Details

Target:	BASP1
Alternative Name:	BASP1 ( <a href="#">BASP1 Products</a> )

## Target Details

Background:	<p>This gene encodes a membrane bound protein with several transient phosphorylation sites and PEST motifs. Conservation of proteins with PEST sequences among different species supports their functional significance. PEST sequences typically occur in proteins with high turnover rates. Immunological characteristics of this protein are species specific. This protein also undergoes N-terminal myristoylation.</p> <p>Alias Symbols: CAP-23, CAP23, MGC8555, NAP-22, NAP22</p> <p>Protein Interaction Partner: UBC, TRNT1, UBXN1, CRYZ, LRCH3, PAN2, HCVgp1, ATXN1, ATF2, Htt, EFTUD2, HSPA5, ATP5A1, RAD23A, ELAVL1,</p> <p>Protein Size: 227</p>
Molecular Weight:	23 kDa
Gene ID:	10409
NCBI Accession:	<a href="#">NM_006317</a> , <a href="#">NP_006308</a>
UniProt:	<a href="#">P80723</a>

## Application Details

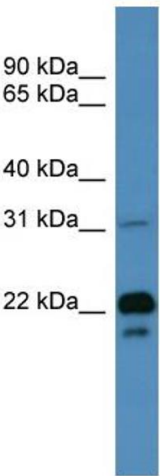
Application Notes:	Optimal working dilutions should be determined experimentally by the investigator.
Comment:	Antigen size: 227 AA
Restrictions:	For Research Use only

## Handling

Format:	Liquid
Concentration:	Lot specific
Buffer:	Liquid. Purified antibody supplied in 1x PBS buffer with 0.09 % (w/v) sodium azide and 2 % sucrose.
Preservative:	Sodium azide
Precaution of Use:	This product contains Sodium azide: a POISONOUS AND HAZARDOUS SUBSTANCE which should be handled by trained staff only.
Handling Advice:	Avoid repeated freeze-thaw cycles.
Storage:	-20 °C
Storage Comment:	For short term use, store at 2-8°C up to 1 week. For long term storage, store at -20°C in small

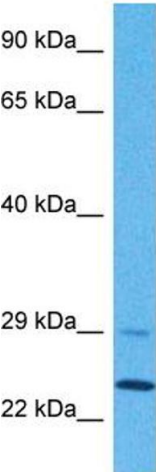
aliquots to prevent freeze-thaw cycles.

Images



**Western Blotting**

**Image 1.** WB Suggested Anti-BASP1 Antibody Titration: 0.125ug/ml ELISA Titer: 1:62500 Positive Control: Human Muscle



Host: Rabbit  
Target Name: BASP1  
Sample Type: Ovary Tumor Lysate  
Antibody Dilution: 1.0µg/ml

**Western Blotting**

**Image 2.** Host: Rabbit Target Name: BASP1 Sample Tissue: Human Ovary Tumor Antibody Dilution: 1ug/ml