

Datasheet for ABIN2788269
anti-ADAM8 antibody (N-Term)[Go to Product page](#)

2 Images

Overview

Quantity:	100 µL
Target:	ADAM8
Binding Specificity:	N-Term
Reactivity:	Human, Mouse, Rat, Rabbit
Host:	Rabbit
Clonality:	Polyclonal
Conjugate:	This ADAM8 antibody is un-conjugated
Application:	Western Blotting (WB)

Product Details

Immunogen:	The immunogen is a synthetic peptide directed towards the N terminal region of human ADAM8
Sequence:	LHLRKNRDLL GSGYTETYTA ANGSEVTEQP RGQDHCIFYQG HVEGYPDSSAA
Predicted Reactivity:	Human: 100%, Mouse: 79%, Rabbit: 79%, Rat: 79%
Characteristics:	This is a rabbit polyclonal antibody against ADAM8. It was validated on Western Blot.
Purification:	Affinity Purified

Target Details

Target:	ADAM8
Alternative Name:	ADAM8 (ADAM8 Products)

Target Details

Background:	<p>This gene encodes a member of the ADAM (a disintegrin and metalloprotease domain) family. Members of this family are membrane-anchored proteins structurally related to snake venom disintegrins, and have been implicated in a variety of biological processes involving cell-cell and cell-matrix interactions, including fertilization, muscle development, and neurogenesis. The protein encoded by this gene may be involved in cell adhesion during neurodegeneration, and it is thought to be a target for allergic respiratory diseases, including asthma.</p> <p>Alias Symbols: CD156, MGC134985, MS2</p> <p>Protein Size: 856</p>
Molecular Weight:	94 kDa
Gene ID:	101
NCBI Accession:	NM_001109 , NP_001100
Pathways:	Activation of Innate immune Response , M Phase

Application Details

Application Notes:	Optimal working dilutions should be determined experimentally by the investigator.
Comment:	Antigen size: 856 AA
Restrictions:	For Research Use only

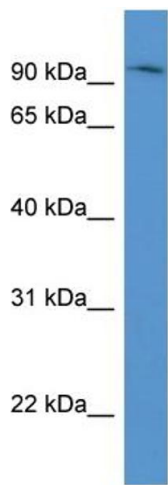
Handling

Format:	Liquid
Concentration:	Lot specific
Buffer:	Liquid. Purified antibody supplied in 1x PBS buffer with 0.09 % (w/v) sodium azide and 2 % sucrose.
Preservative:	Sodium azide
Precaution of Use:	This product contains Sodium azide: a POISONOUS AND HAZARDOUS SUBSTANCE which should be handled by trained staff only.
Handling Advice:	Avoid repeated freeze-thaw cycles.
Storage:	-20 °C
Storage Comment:	For short term use, store at 2-8°C up to 1 week. For long term storage, store at -20°C in small aliquots to prevent freeze-thaw cycles.



Western Blotting

Image 1. WB Suggested Anti-ADAM8 Antibody Titration:
0.2-1 ug/ml
ELISA Titer: 1:62500
Positive Control: PANC1 cell lysate



Rabbit Anti-ADAM8 Antibody
Catalog Number: ARP59943
Lot Number: QC30848
Lane: PANC1 Cell Lysate

Antibody Titration: 1.0µg/ml
Gel Concentration: 12%

Western Blotting

Image 2. WB Suggested Anti-ADAM8
Antibody Titration: 0.2-1 µg/mL ELISA Titer: 1::2500
Positive Control: PANC1 cell lysate