



[Go to Product page](#)

Datasheet for ABIN2788270
anti-ADCYAP1R1 antibody (C-Term)

1 Image

Overview

| | |
|----------------------|--|
| Quantity: | 100 µL |
| Target: | ADCYAP1R1 |
| Binding Specificity: | C-Term |
| Reactivity: | Human, Mouse, Rat, Cow, Dog, Guinea Pig, Horse, Zebrafish (Danio rerio), Rabbit, Sheep |
| Host: | Rabbit |
| Clonality: | Polyclonal |
| Conjugate: | This ADCYAP1R1 antibody is un-conjugated |
| Application: | Western Blotting (WB) |

Product Details

| | |
|-----------------------|---|
| Immunogen: | The immunogen is a synthetic peptide directed towards the C terminal region of human ADCYAP1R1 |
| Sequence: | NESSIYLRRL RSTLLLIPLF GIHYTVFAFS PENVSKRERL VFELGLGSFQ |
| Predicted Reactivity: | Cow: 100%, Dog: 100%, Guinea Pig: 100%, Horse: 100%, Human: 100%, Mouse: 100%, Rabbit: 100%, Rat: 100%, Sheep: 100%, Zebrafish: 86% |
| Characteristics: | This is a rabbit polyclonal antibody against ADCYAP1R1. It was validated on Western Blot. |
| Purification: | Affinity Purified |

Target Details

| | |
|---------|-----------|
| Target: | ADCYAP1R1 |
|---------|-----------|

Target Details

Alternative Name: ADCYAP1R1 ([ADCYAP1R1 Products](#))

Background: This gene encodes type I adenylate cyclase activating polypeptide receptor, which is a membrane-associated protein and shares significant homology with members of the glucagon/secretin receptor family. This receptor mediates diverse biological actions of adenylate cyclase activating polypeptide 1 and is positively coupled to adenylate cyclase. Multiple alternatively spliced transcript variants encoding distinct isoforms have been identified.

Alias Symbols: PAC1, PACAPR, PACAPRI, PAC1R

Protein Interaction Partner: ADCYAP1, CALM1,

Protein Size: 468

Molecular Weight: 51 kDa

Gene ID: 117

NCBI Accession: [NM_001118](#), [NP_001109](#)

UniProt: [P41586](#)

Pathways: [Neurotrophin Signaling Pathway](#), [cAMP Metabolic Process](#), [Regulation of Carbohydrate Metabolic Process](#)

Application Details

Application Notes: Optimal working dilutions should be determined experimentally by the investigator.

Comment: Antigen size: 468 AA

Restrictions: For Research Use only

Handling

Format: Liquid

Concentration: Lot specific

Buffer: Liquid. Purified antibody supplied in 1x PBS buffer with 0.09 % (w/v) sodium azide and 2 % sucrose.

Preservative: Sodium azide

Precaution of Use: This product contains Sodium azide: a POISONOUS AND HAZARDOUS SUBSTANCE which should be handled by trained staff only.

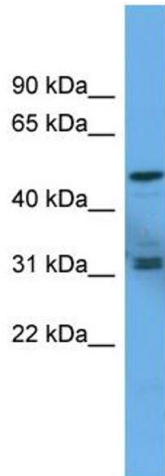
Handling

Handling Advice: Avoid repeated freeze-thaw cycles.

Storage: -20 °C

Storage Comment: For short term use, store at 2-8°C up to 1 week. For long term storage, store at -20°C in small aliquots to prevent freeze-thaw cycles.

Images



Western Blotting

Image 1. WB Suggested Anti-ADCYAP1R1 Antibody
Titration: 0.2-1 ug/ml ELISA Titer: 1:62500 Positive Control:
Human brain