

Datasheet for ABIN2788272
anti-ADD3 antibody (C-Term)[Go to Product page](#)

3 Images

Overview

Quantity:	100 µL
Target:	ADD3
Binding Specificity:	C-Term
Reactivity:	Human, Mouse, Rat, Cow, Guinea Pig, Dog, Horse, Rabbit, Zebrafish (Danio rerio)
Host:	Rabbit
Clonality:	Polyclonal
Conjugate:	This ADD3 antibody is un-conjugated
Application:	Western Blotting (WB), Immunofluorescence (IF)

Product Details

Immunogen:	The immunogen is a synthetic peptide directed towards the C terminal region of human ADD3
Sequence:	DELAKRVSRL STSTTIENIE ITIKSPEKIE EVLSPEGSPS KSPSKKKKKF
Predicted Reactivity:	Cow: 100%, Dog: 100%, Guinea Pig: 100%, Horse: 100%, Human: 100%, Mouse: 100%, Rabbit: 100%, Rat: 100%, Zebrafish: 100%
Characteristics:	This is a rabbit polyclonal antibody against ADD3. It was validated on Western Blot.
Purification:	Affinity Purified

Target Details

Target:	ADD3
Alternative Name:	ADD3 (ADD3 Products)

Target Details

Background:	<p>Adducins are heteromeric proteins composed of different subunits referred to as adducin alpha, beta and gamma. The three subunits are encoded by distinct genes and belong to a family of membrane skeletal proteins involved in the assembly of spectrin-actin network in erythrocytes and at sites of cell-cell contact in epithelial tissues. Polymorphisms resulting in amino acid substitutions in these two subunits have been associated with the regulation of blood pressure in an animal model of hypertension. Heterodimers consisting of alpha and gamma subunits have also been described. Structurally, each subunit is comprised of two distinct domains.</p> <p>Alias Symbols: ADDL</p> <p>Protein Interaction Partner: UBC, RNF2, HDAC8, ATXN1, SUMO1, PRKCA,</p> <p>Protein Size: 706</p>
-------------	--

Molecular Weight:	78 kDa
-------------------	--------

Gene ID:	120
----------	-----

NCBI Accession:	NM_001121 , NP_001112
-----------------	---

UniProt:	Q9UEY8
----------	------------------------

Application Details

Application Notes:	Optimal working dilutions should be determined experimentally by the investigator.
Comment:	Antigen size: 706 AA
Restrictions:	For Research Use only

Handling

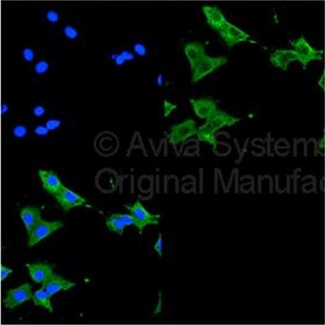
Format:	Liquid
Concentration:	Lot specific
Buffer:	Liquid. Purified antibody supplied in 1x PBS buffer with 0.09 % (w/v) sodium azide and 2 % sucrose.
Preservative:	Sodium azide
Precaution of Use:	This product contains Sodium azide: a POISONOUS AND HAZARDOUS SUBSTANCE which should be handled by trained staff only.
Handling Advice:	Avoid repeated freeze-thaw cycles.
Storage:	-20 °C

Handling

Storage Comment: For short term use, store at 2-8°C up to 1 week. For long term storage, store at -20°C in small aliquots to prevent freeze-thaw cycles.

Images

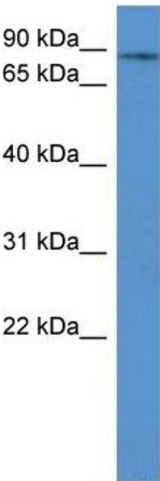
HEI-OC1
DAPI Anti-gamma-ADD(ARP59946)



ADD3 (ARP59946_P050)
Immunofluorescence
Sample: mouse HEI-OC1 auditory cells
Dilution: 1 to 100
Application data in forum

Submitted by:
Dr. Channy Park
CB&G House Research Institute

Image 1.

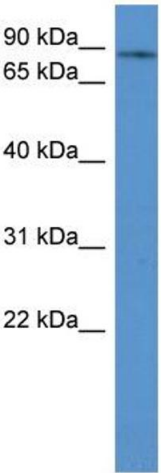


Rabbit Anti-ADD3 Antibody
Catalog Number: ARP59946
Lot Number: QC30853
Lane: THP-1 Cell Lysate

Antibody Titration: 1.0µg/ml
Gel Concentration: 12%

Western Blotting

Image 2. WB Suggested Anti-ADD3
Antibody Titration: 0.2-1 µg/mL ELISA Titer: 1:12500
Positive Control: THP-1 cell lysate



Western Blotting

Image 3. WB Suggested Anti-ADD3 Antibody Titration:
0.2-1 ug/ml
ELISA Titer: 1:312500
Positive Control: THP-1 cell lysate