

Datasheet for ABIN2788280
anti-ADRA1D antibody (C-Term)[Go to Product page](#)

1 Image

Overview

Quantity:	100 µL
Target:	ADRA1D
Binding Specificity:	C-Term
Reactivity:	Human, Rat, Mouse, Dog, Horse, Cow, Guinea Pig, Rabbit, Sheep, Zebrafish (Danio rerio)
Host:	Rabbit
Clonality:	Polyclonal
Conjugate:	This ADRA1D antibody is un-conjugated
Application:	Western Blotting (WB)

Product Details

Immunogen:	The immunogen is a synthetic peptide directed towards the C terminal region of human ADRA1D
Sequence:	RSLEAGVKRE RKGASEVVLRL IHCRTGAATGA DGAHGMRSKAK GHTFRSSLSV
Predicted Reactivity:	Cow: 100%, Dog: 100%, Guinea Pig: 100%, Horse: 100%, Human: 100%, Mouse: 86%, Rabbit: 100%, Rat: 93%, Sheep: 93%, Zebrafish: 79%
Characteristics:	This is a rabbit polyclonal antibody against ADRA1D. It was validated on Western Blot.
Purification:	Affinity Purified

Target Details

Target:	ADRA1D
---------	--------

Target Details

Alternative Name:	ADRA1D (ADRA1D Products)
Background:	<p>Alpha-1-adrenergic receptors (alpha-1-ARs) are members of the G protein-coupled receptor superfamily. They activate mitogenic responses and regulate growth and proliferation of many cells. There are 3 alpha-1-AR subtypes: alpha-1A, -1B and -1D, all of which signal through the Gq/11 family of G-proteins and different subtypes show different patterns of activation. This gene encodes alpha-1D-adrenergic receptor. Similar to alpha-1B-adrenergic receptor gene, this gene comprises 2 exons and a single intron that interrupts the coding region.</p> <p>Alias Symbols: ADRA1, ADRA1A, ADRA1R, ALPHA1, DAR, dJ779E11.2</p> <p>Protein Interaction Partner: SNTB1, DTNA, AMFR, ACTA2, GOPC, ERLIN2, CKAP4, ERLIN1, UTRN, SNTB2, SNTA1, LNX1, ELAVL1, SNTG1, NOS1, ADRA1A, FLNC,</p> <p>Protein Size: 572</p>
Molecular Weight:	60 kDa
Gene ID:	146
NCBI Accession:	NM_000678 , NP_000669
UniProt:	P25100

Application Details

Application Notes:	Optimal working dilutions should be determined experimentally by the investigator.
Comment:	Antigen size: 572 AA
Restrictions:	For Research Use only

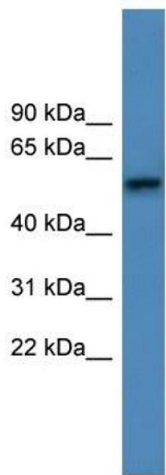
Handling

Format:	Liquid
Concentration:	Lot specific
Buffer:	Liquid. Purified antibody supplied in 1x PBS buffer with 0.09 % (w/v) sodium azide and 2 % sucrose.
Preservative:	Sodium azide
Precaution of Use:	This product contains Sodium azide: a POISONOUS AND HAZARDOUS SUBSTANCE which should be handled by trained staff only.
Handling Advice:	Avoid repeated freeze-thaw cycles.

Handling

Storage:	-20 °C
Storage Comment:	For short term use, store at 2-8°C up to 1 week. For long term storage, store at -20°C in small aliquots to prevent freeze-thaw cycles.

Images



Western Blotting

Image 1. WB Suggested Anti-ADRA1D Antibody Titration: 0.2-1 ug/ml ELISA Titer: 1:62500 Positive Control: Human Placenta