

Datasheet for ABIN2788289
anti-AP1B1 antibody (C-Term)[Go to Product page](#)

1 Image

Overview

Quantity:	100 µL
Target:	AP1B1
Binding Specificity:	C-Term
Reactivity:	Human, Mouse, Rat, Cow, Dog, Horse, Rabbit, Zebrafish (Danio rerio), Guinea Pig
Host:	Rabbit
Clonality:	Polyclonal
Conjugate:	This AP1B1 antibody is un-conjugated
Application:	Western Blotting (WB)

Product Details

Immunogen:	The immunogen is a synthetic peptide directed towards the C terminal region of human AP1B1
Sequence:	KLFLKKTET QELVQQVLSL ATQSDNPDL RDRGYIYWRL LSTDPVAAKE
Predicted Reactivity:	Cow: 100%, Dog: 100%, Guinea Pig: 100%, Horse: 100%, Human: 100%, Mouse: 100%, Rabbit: 100%, Rat: 100%, Zebrafish: 100%
Characteristics:	This is a rabbit polyclonal antibody against AP1B1. It was validated on Western Blot.
Purification:	Affinity Purified

Target Details

Target:	AP1B1
Alternative Name:	AP1B1 (AP1B1 Products)

Target Details

Background:	<p>Adaptor protein complex 1 is found at the cytoplasmic face of coated vesicles located at the Golgi complex, where it mediates both the recruitment of clathrin to the membrane and the recognition of sorting signals within the cytosolic tails of transmembrane receptors. This complex is a heterotetramer composed of two large, one medium, and one small adaptin subunit. The protein encoded by this gene serves as one of the large subunits of this complex and is a member of the adaptin protein family. This gene is a candidate meningioma gene. Alternative splicing results in multiple transcript variants.</p> <p>Alias Symbols: ADTB1, AP105A, BAM22, CLAPB2</p> <p>Protein Interaction Partner: UBC, EGFR, RPA3, RPA2, RPA1, TRMT61A, DIABLO, INTS9, TBC1D2, TRIP10, ABCE1, PPP6R3, NTRK2, AP1G1, VCP, BARD1, AP1M1, AP1S2, AP1S1, EPS15, AP2M1, EPN1, SNAP91, CLINT1, COPS5, CUL3, SHBG, CDK2, SIRT7, SNCA, ATF7IP, KIF13A, ATM, AP1M2, PIP5K1C, BUB1B, BUB1,</p> <p>Protein Size: 949</p>
Molecular Weight:	104 kDa
Gene ID:	162
NCBI Accession:	NM_001127 , NP_001118
UniProt:	Q10567

Application Details

Application Notes:	Optimal working dilutions should be determined experimentally by the investigator.
Comment:	Antigen size: 949 AA
Restrictions:	For Research Use only

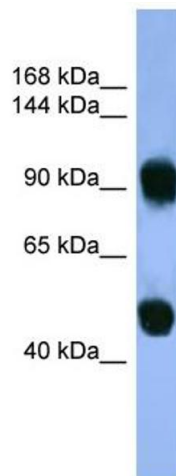
Handling

Format:	Liquid
Concentration:	Lot specific
Buffer:	Liquid. Purified antibody supplied in 1x PBS buffer with 0.09 % (w/v) sodium azide and 2 % sucrose.
Preservative:	Sodium azide
Precaution of Use:	This product contains Sodium azide: a POISONOUS AND HAZARDOUS SUBSTANCE which should be handled by trained staff only.

Handling

Handling Advice:	Avoid repeated freeze-thaw cycles.
Storage:	-20 °C
Storage Comment:	For short term use, store at 2-8°C up to 1 week. For long term storage, store at -20°C in small aliquots to prevent freeze-thaw cycles.

Images



Western Blotting

Image 1. WB Suggested Anti-AP1B1 Antibody Titration: 0.2-1 ug/ml ELISA Titer: 1:62500 Positive Control: Human Muscle