



[Go to Product page](#)

Datasheet for ABIN2788302

## anti-COL4a3 antibody (N-Term)

### 2 Images

#### Overview

Quantity:	100 µL
Target:	COL4a3 (COL4A3)
Binding Specificity:	N-Term
Reactivity:	Human, Mouse, Guinea Pig, Horse, Rabbit
Host:	Rabbit
Clonality:	Polyclonal
Conjugate:	This COL4a3 antibody is un-conjugated
Application:	Western Blotting (WB)

#### Product Details

Immunogen:	The immunogen is a synthetic peptide directed towards the N terminal region of human COL4A3
Sequence:	GPPGVPGSPG SSRPGLRGAP GWPLKGSKG ERGRPGKDAM GTPGSPGCAG
Predicted Reactivity:	Guinea Pig: 85%, Horse: 86%, Human: 100%, Mouse: 92%, Rabbit: 85%
Characteristics:	This is a rabbit polyclonal antibody against COL4A3. It was validated on Western Blot.
Purification:	Affinity Purified

#### Target Details

Target:	COL4a3 (COL4A3)
Alternative Name:	COL4A3 ( <a href="#">COL4A3 Products</a> )

## Target Details

---

**Background:** Type IV collagen, the major structural component of basement membranes, is a multimeric protein composed of 3 alpha subunits. These subunits are encoded by 6 different genes, alpha 1 through alpha 6, each of which can form a triple helix structure with 2 other subunits to form type IV collagen. This gene encodes alpha 3. In the Goodpasture syndrome, autoantibodies bind to the collagen molecules in the basement membranes of alveoli and glomeruli. The epitopes that elicit these autoantibodies are localized largely to the non-collagenous C-terminal domain of the protein. A specific kinase phosphorylates amino acids in this same C-terminal region and the expression of this kinase is upregulated during pathogenesis. There are multiple alternate transcripts that appear to be unique to this human alpha 3 gene and alternate splicing is restricted to the six exons that encode this C-terminal domain. This gene is also linked to an autosomal recessive form of Alport syndrome. The mutations contributing to this syndrome are also located within the exons that encode this C-terminal region. Like the other members of the type IV collagen gene family, this gene is organized in a head-to-head conformation with another type IV collagen gene so that each gene pair shares a common promoter. Some exons of this gene are interspersed with exons of an uncharacterized gene which is on the opposite strand.

Alias Symbols: -

Protein Interaction Partner: VHL, UBC, SERPINE2, OSM, MFAP2, FBLN2, FN1, DCN, CD93, MMP9, APP, SAA1, MATN2, TGFBI, CAMK2B, USH2A, ANTXR2, COL4A3BP, HABP2,

Protein Size: 1637

---

Molecular Weight: 156 kDa

---

Gene ID: 1285

---

NCBI Accession: [NM\\_031362, NP\\_112730](#)

---

UniProt: [E7ENN2](#)

---

Pathways: [Sensory Perception of Sound, Positive Regulation of Endopeptidase Activity](#)

## Application Details

---

**Application Notes:** Optimal working dilutions should be determined experimentally by the investigator.

---

**Comment:** Antigen size: 1637 AA

---

**Restrictions:** For Research Use only

## Handling

Format:	Liquid
Concentration:	Lot specific
Buffer:	Liquid. Purified antibody supplied in 1x PBS buffer with 0.09 % (w/v) sodium azide and 2 % sucrose.
Preservative:	Sodium azide
Precaution of Use:	This product contains Sodium azide: a POISONOUS AND HAZARDOUS SUBSTANCE which should be handled by trained staff only.
Handling Advice:	Avoid repeated freeze-thaw cycles.
Storage:	-20 °C
Storage Comment:	For short term use, store at 2-8°C up to 1 week. For long term storage, store at -20°C in small aliquots to prevent freeze-thaw cycles.

## Images



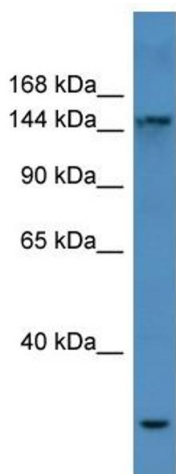
### Western Blotting

#### Image 1. WB Suggested Anti-COL4A3 Antibody Titration:

0.2-1 ug/ml

**ELISA Titer:** 1:62500

**Positive Control:** Human Liver



Rabbit Anti-COL4A3 Antibody  
Catalog Number: ARP60007  
Lot Number: QC30912  
Lane: Fetal Liver Lysate

Antibody Titration: 1.0µg/ml  
Gel Concentration: 6-18%

### Western Blotting

#### Image 2. WB Suggested Anti-COL4A3

Antibody Titration: 0.2-1 µg/mL ELISA Titer: 1::2500

Positive Control: Human Liver