

Datasheet for ABIN2788315
anti-F2RL2 antibody (C-Term)[Go to Product page](#)

2 Images

Overview

Quantity:	100 µL
Target:	F2RL2
Binding Specificity:	C-Term
Reactivity:	Human, Cow, Pig
Host:	Rabbit
Clonality:	Polyclonal
Conjugate:	This F2RL2 antibody is un-conjugated
Application:	Western Blotting (WB)

Product Details

Immunogen:	The immunogen is a synthetic peptide directed towards the C terminal region of human F2RL2
Sequence:	HANYYYNNTD GLYFIYLIAL CLGSLNSCLD PFLYFLMSKT RNHSTAYLTK
Predicted Reactivity:	Cow: 77%, Human: 100%, Pig: 77%
Characteristics:	This is a rabbit polyclonal antibody against F2RL2. It was validated on Western Blot.
Purification:	Affinity Purified

Target Details

Target:	F2RL2
Alternative Name:	F2RL2 (F2RL2 Products)
Background:	Coagulation factor II (thrombin) receptor-like 2 (F2RL2) is a member of the large family of 7-

Target Details

transmembrane-region receptors that couple to guanosine-nucleotide-binding proteins. F2RL2 is also a member of the protease-activated receptor family and activated by thrombin. F2RL2 is activated by proteolytic cleavage of its extracellular amino terminus. The new amino terminus functions as a tethered ligand and activates the receptor. F2RL2 is a cofactor for F2RL3 activation by thrombin. It mediates thrombin-triggered phosphoinositide hydrolysis and is expressed in a variety of tissues.

Alias Symbols: PAR3, PAR-3

Protein Interaction Partner: UBC, F11R, ECT2, JAM3, JAM2, F2RL3, CDH5, F2, CTSG,
Protein Size: 374

Molecular Weight:	42 kDa
Gene ID:	2151
NCBI Accession:	NM_004101 , NP_004092
UniProt:	O00254
Pathways:	Cell-Cell Junction Organization , Regulation of G-Protein Coupled Receptor Protein Signaling

Application Details

Application Notes:	Optimal working dilutions should be determined experimentally by the investigator.
Comment:	Antigen size: 374 AA
Restrictions:	For Research Use only

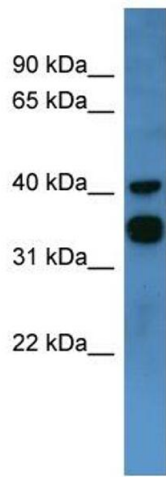
Handling

Format:	Liquid
Concentration:	Lot specific
Buffer:	Liquid. Purified antibody supplied in 1x PBS buffer with 0.09 % (w/v) sodium azide and 2 % sucrose.
Preservative:	Sodium azide
Precaution of Use:	This product contains Sodium azide: a POISONOUS AND HAZARDOUS SUBSTANCE which should be handled by trained staff only.
Handling Advice:	Avoid repeated freeze-thaw cycles.
Storage:	-20 °C

Handling

Storage Comment: For short term use, store at 2-8°C up to 1 week. For long term storage, store at -20°C in small aliquots to prevent freeze-thaw cycles.

Images



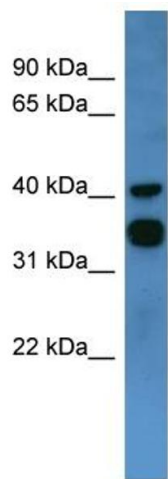
Western Blotting

Image 1. WB Suggested Anti-F2RL2 Antibody Titration:

0.2-1 ug/ml

ELISA Titer: 1:62500

Positive Control: Human heart



Rabbit Anti-F2RL2 Antibody
Catalog Number: ARP60037
Lot Number: QC30938
Lane: Fetal Heart Lysate

Antibody Titration: 1.0µg/ml
Gel Concentration: 12%

Western Blotting

Image 2. WB Suggested Anti-F2RL2

Antibody Titration: 0.2-1 µg/mL ELISA Titer: 1::2500

Positive Control: Human heart