

Datasheet for ABIN2788322
anti-C1QA antibody (N-Term)



[Go to Product page](#)

2 Images

Overview

Quantity:	100 µL
Target:	C1QA
Binding Specificity:	N-Term
Reactivity:	Human, Mouse, Rat, Cow, Dog, Horse, Pig, Rabbit
Host:	Rabbit
Clonality:	Polyclonal
Conjugate:	This C1QA antibody is un-conjugated
Application:	Western Blotting (WB)

Product Details

Immunogen:	The immunogen is a synthetic peptide directed towards the N terminal region of human C1QA
Sequence:	PGKVGYPGPS GPLGARGIPG IKGTKGSPGN IKDQPRPAFS AIRRNPPMGG
Predicted Reactivity:	Cow: 100%, Dog: 86%, Horse: 86%, Human: 100%, Mouse: 86%, Pig: 86%, Rabbit: 85%, Rat: 86%
Characteristics:	This is a rabbit polyclonal antibody against C1QA. It was validated on Western Blot.
Purification:	Affinity Purified

Target Details

Target:	C1QA
Alternative Name:	C1QA (C1QA Products)
Background:	This gene encodes a major constituent of the human complement subcomponent C1q. C1q

Target Details

associates with C1r and C1s in order to yield the first component of the serum complement system. Deficiency of C1q has been associated with lupus erythematosus and glomerulonephritis. C1q is composed of 18 polypeptide chains: six A-chains, six B-chains, and six C-chains. Each chain contains a collagen-like region located near the N terminus and a C-terminal globular region. The A-, B-, and C-chains are arranged in the order A-C-B on chromosome 1. This gene encodes the A-chain polypeptide of human complement subcomponent C1q.

Alias Symbols: -

Protein Interaction Partner: RAC1, SLC25A47, GNPAT1, UBQLN1, UBQLN2, HIPK3, PIAS2, BAG6, SGTA, PPP1CC, APOA1, PPP1CA, PTX3, C1QBP, CSPG4, C1R, SFTPA1, HRG, FN1, DCN, CR1, C1S, CD93, C1QC, C1QB, COL2A1, APCS, CRP,

Protein Size: 245

Molecular Weight:	26 kDa
Gene ID:	712
NCBI Accession:	NM_015991 , NP_057075
UniProt:	P02745
Pathways:	Complement System

Application Details

Application Notes:	Optimal working dilutions should be determined experimentally by the investigator.
Comment:	Antigen size: 245 AA
Restrictions:	For Research Use only

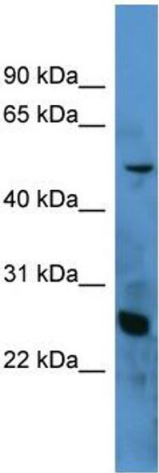
Handling

Format:	Liquid
Concentration:	Lot specific
Buffer:	Liquid. Purified antibody supplied in 1x PBS buffer with 0.09 % (w/v) sodium azide and 2 % sucrose.
Preservative:	Sodium azide
Precaution of Use:	This product contains Sodium azide: a POISONOUS AND HAZARDOUS SUBSTANCE which should be handled by trained staff only.

Handling

Handling Advice:	Avoid repeated freeze-thaw cycles.
Storage:	-20 °C
Storage Comment:	For short term use, store at 2-8°C up to 1 week. For long term storage, store at -20°C in small aliquots to prevent freeze-thaw cycles.

Images



Western Blotting

Image 1. WB Suggested Anti-C1QA Antibody Titration:

0.2-1 ug/ml

ELISA Titer: 1:62500

Positive Control: Hela cell lysate



Rabbit Anti-C1QA Antibody
Catalog Number: ARP60064
Lot Number: QC30961
Lane: Hela Cell Lysate

Antibody Titration: 1.0µg/ml
Gel Concentration: 12%

Western Blotting

Image 2. WB Suggested Anti-C1QA

Antibody Titration: 0.2-1 µg/mL ELISA Titer: 1::2500

Positive Control: Hela cell lysate