

Datasheet for ABIN2788326  
**anti-MRPL49 antibody (N-Term)**[Go to Product page](#)

## 1 Image

## Overview

Quantity:	100 µL
Target:	MRPL49
Binding Specificity:	N-Term
Reactivity:	Human, Mouse, Rat, Cow, Dog, Guinea Pig, Horse, Rabbit
Host:	Rabbit
Clonality:	Polyclonal
Conjugate:	This MRPL49 antibody is un-conjugated
Application:	Western Blotting (WB)

## Product Details

Immunogen:	The immunogen is a synthetic peptide directed towards the N terminal region of human MRPL49
Sequence:	ESVDEYQFVE RLLPATRIPD PPKHEHYPTP SGWQPPRDPP PNLPHYVRRS
Predicted Reactivity:	Cow: 86%, Dog: 86%, Guinea Pig: 92%, Horse: 92%, Human: 100%, Mouse: 79%, Rabbit: 83%, Rat: 86%
Characteristics:	This is a rabbit polyclonal antibody against MRPL49. It was validated on Western Blot.
Purification:	Affinity Purified

## Target Details

Target:	MRPL49
---------	--------

## Target Details

Alternative Name:	MRPL49 ( <a href="#">MRPL49 Products</a> )
Background:	<p>Mammalian mitochondrial ribosomal proteins are encoded by nuclear genes and help in protein synthesis within the mitochondrion. Mitochondrial ribosomes (mitoribosomes) consist of a small 28S subunit and a large 39S subunit. They have an estimated 75 % protein to rRNA composition compared to prokaryotic ribosomes, where this ratio is reversed. Another difference between mammalian mitoribosomes and prokaryotic ribosomes is that the latter contain a 5S rRNA. Among different species, the proteins comprising the mitoribosome differ greatly in sequence, and sometimes in biochemical properties, which prevents easy recognition by sequence homology. This gene encodes a 39S subunit protein. This gene and the gene for the HRD1 protein use in their respective 3' UTRs some of the same genomic sequence. Pseudogenes corresponding to this gene are found on chromosomes 5q and 8p.</p> <p>Alias Symbols: C11orf4, L49mt, MGC10656, NOF, NOF1, MRP-L49</p> <p>Protein Interaction Partner: CEP57, NPM1, METTL18, MRPL52, PRKCDBP, TMEM177, MRPL38, MRPL39, NENF, TIMM10, SCFD1, PPT2, MTHFD1, MGST3, DLST, CDH2, APP, CAND1, COPS5, CUL1, CUL3, TCF3, UBC, ICT1, OXA1L,</p> <p>Protein Size: 166</p>
Molecular Weight:	19 kDa
Gene ID:	740
NCBI Accession:	<a href="#">NM_004927</a> , <a href="#">NP_004918</a>
UniProt:	<a href="#">Q13405</a>

## Application Details

Application Notes:	Optimal working dilutions should be determined experimentally by the investigator.
Comment:	Antigen size: 166 AA
Restrictions:	For Research Use only

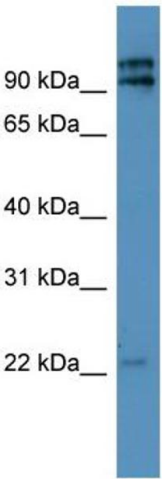
## Handling

Format:	Liquid
Concentration:	Lot specific
Buffer:	Liquid. Purified antibody supplied in 1x PBS buffer with 0.09 % (w/v) sodium azide and 2 % sucrose.

## Handling

Preservative:	Sodium azide
Precaution of Use:	This product contains Sodium azide: a POISONOUS AND HAZARDOUS SUBSTANCE which should be handled by trained staff only.
Handling Advice:	Avoid repeated freeze-thaw cycles.
Storage:	-20 °C
Storage Comment:	For short term use, store at 2-8°C up to 1 week. For long term storage, store at -20°C in small aliquots to prevent freeze-thaw cycles.

## Images



### Western Blotting

**Image 1.** WB Suggested Anti-MRPL49 Antibody Titration:  
0.2-1 ug/ml ELISA Titer: 1:62500 Positive Control: Jurkat cell lysate