

Datasheet for ABIN2788336  
**anti-CTSC antibody (Middle Region)**



[Go to Product page](#)

1 Image

## Overview

Quantity:	100 µL
Target:	CTSC
Binding Specificity:	Middle Region
Reactivity:	Human, Mouse, Cow, Dog, Horse
Host:	Rabbit
Clonality:	Polyclonal
Conjugate:	This CTSC antibody is un-conjugated
Application:	Western Blotting (WB)

## Product Details

Immunogen:	The immunogen is a synthetic peptide directed towards the middle region of human CTSC
Sequence:	WTATTYMEYE TLTLGDMIRR SGGHSRKIPR PKPAPLTAEI QQKILHLPTS
Predicted Reactivity:	Cow: 86%, Dog: 79%, Horse: 86%, Human: 100%, Mouse: 79%
Characteristics:	This is a rabbit polyclonal antibody against CTSC. It was validated on Western Blot.
Purification:	Affinity Purified

## Target Details

Target:	CTSC
Alternative Name:	CTSC ( <a href="#">CTSC Products</a> )
Background:	CTSC is a member of the peptidase C1 family, is a lysosomal cysteine proteinase that appears

## Target Details

to be a central coordinator for activation of many serine proteinases in immune/inflammatory cells. It is composed of a dimer of disulfide-linked heavy and light chains, both produced from a single protein precursor, and a residual portion of the propeptide acts as an intramolecular chaperone for the folding and stabilization of the mature enzyme. This enzyme requires chloride ions for activity and can degrade glucagon. Defects in CTSC have been shown to be a cause of Papillon-Lefevre syndrome, an autosomal recessive disorder characterized by palmoplantar keratosis and periodontitis.

Alias Symbols: CPPI, DPP1, DPPI, HMS, JP, JPD, PALS, PLS, DPP-I

Protein Interaction Partner: SUMO1, UBC, NEDD8, ARMC9, ANKMY2, ARIH1, UBA2, ADSL, FBXO6, XRN2, CAPN1, CD81, CTSC, CTSL,

Protein Size: 463

Molecular Weight: 8 kDa

Gene ID: 1075

NCBI Accession: [NM\\_001814](#), [NP\\_001805](#)

UniProt: [P53634](#)

## Application Details

Application Notes: Optimal working dilutions should be determined experimentally by the investigator.

Comment: Antigen size: 463 AA

Restrictions: For Research Use only

## Handling

Format: Liquid

Concentration: Lot specific

Buffer: Liquid. Purified antibody supplied in 1x PBS buffer with 0.09 % (w/v) sodium azide and 2 % sucrose.

Preservative: Sodium azide

Precaution of Use: This product contains Sodium azide: a POISONOUS AND HAZARDOUS SUBSTANCE which should be handled by trained staff only.

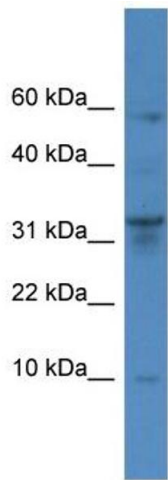
Handling Advice: Avoid repeated freeze-thaw cycles.

Storage: -20 °C

Handling

Storage Comment: For short term use, store at 2-8°C up to 1 week. For long term storage, store at -20°C in small aliquots to prevent freeze-thaw cycles.

Images



Western Blotting

**Image 1.** WB Suggested Anti-CTSC Antibody Titration: 0.2-1 ug/ml ELISA Titer: 1:1562500 Positive Control: PANC1 cell lysate