

Datasheet for ABIN2788337
anti-CTSC antibody (N-Term)



[Go to Product page](#)

1 Image

Overview

| | |
|----------------------|---|
| Quantity: | 100 µL |
| Target: | CTSC |
| Binding Specificity: | N-Term |
| Reactivity: | Human, Rat, Pig, Rabbit |
| Host: | Rabbit |
| Clonality: | Polyclonal |
| Conjugate: | This CTSC antibody is un-conjugated |
| Application: | Western Blotting (WB), Immunohistochemistry (IHC) |

Product Details

| | |
|-----------------------|---|
| Immunogen: | The immunogen is a synthetic peptide directed towards the N-terminal region of Human CTSC |
| Sequence: | VNIAHLKNSQ EKYSNRLYKY DHNFVKAINA IQKSWTATTY MEYETLTLGD |
| Predicted Reactivity: | Human: 100%, Pig: 79%, Rabbit: 90%, Rat: 100% |
| Characteristics: | This is a rabbit polyclonal antibody against CTSC. It was validated on Western Blot. |
| Purification: | Affinity Purified |

Target Details

| | |
|-------------------|--|
| Target: | CTSC |
| Alternative Name: | CTSC (CTSC Products) |
| Background: | CTSC is a member of the peptidase C1 family, is a lysosomal cysteine proteinase that appears |

Target Details

to be a central coordinator for activation of many serine proteinases in immune/inflammatory cells. It is composed of a dimer of disulfide-linked heavy and light chains, both produced from a single protein precursor, and a residual portion of the propeptide acts as an intramolecular chaperone for the folding and stabilization of the mature enzyme. This enzyme requires chloride ions for activity and can degrade glucagon. Defects in CTSC have been shown to be a cause of Papillon-Lefevre syndrome, an autosomal recessive disorder characterized by palmoplantar keratosis and periodontitis.

Protein Interaction Partner: SUMO1, UBC, NEDD8, ARMC9, ANKMY2, ARIH1, UBA2, ADSL, FBXO6, XRN2, CAPN1, CD81, CTSC, CTSL,

Protein Size: 463

Molecular Weight: 50 kDa

Gene ID: 1075

UniProt: [P53634](#)

Application Details

Restrictions: For Research Use only

Handling

Format: Liquid

Concentration: 1 mg/mL

Buffer: Liquid. Purified antibody supplied in 1x PBS buffer with 0.09 % (w/v) sodium azide and 2 % sucrose.

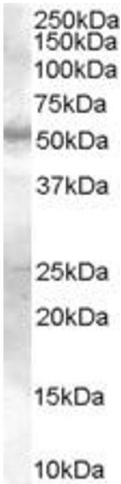
Preservative: Sodium azide

Precaution of Use: This product contains Sodium azide: a POISONOUS AND HAZARDOUS SUBSTANCE which should be handled by trained staff only.

Handling Advice: Avoid repeat freeze-thaw cycles.

Storage: -20 °C

Storage Comment: For short term use, store at 2-8°C up to 1 week. For long term storage, store at -20°C in small aliquots to prevent freeze-thaw cycles.



Western Blotting

Image 1.