



[Go to Product page](#)

Datasheet for ABIN2788345  
**anti-Cyp2f4 antibody (Middle Region)**

1 Image

Overview

Quantity:	100 µL
Target:	Cyp2f4 (CYP2F4)
Binding Specificity:	Middle Region
Reactivity:	Rat, Human, Mouse, Pig, Rabbit, Cow, Dog, Goat, Horse
Host:	Rabbit
Clonality:	Polyclonal
Conjugate:	This Cyp2f4 antibody is un-conjugated
Application:	Western Blotting (WB)

Product Details

Sequence:	EHQDSLDPNS PRDFIDCFLT KMVQEKQDPL SHFNMDTLLM TTHNLLFGGT
Predicted Reactivity:	Cow: 86%, Dog: 77%, Goat: 86%, Horse: 86%, Human: 100%, Mouse: 86%, Pig: 86%, Rabbit: 79%, Rat: 83%
Characteristics:	This is a rabbit polyclonal antibody against Cyp2f4. It was validated on Western Blot.
Purification:	Affinity Purified

Target Details

Target:	Cyp2f4 (CYP2F4)
Alternative Name:	Cyp2f4 ( <a href="#">CYP2F4 Products</a> )
Background:	Cyp2f4 is a member of the p450 2F subfamily, forms styrene glycol from styrene in liver and

## Target Details

---

lung microsomes.

Alias Symbols: CYP4502F4, Cyp2f1|Cyp2f2, Cyp2f1, Cyp2f2

Protein Size: 491

---

Molecular Weight: 54 kDa

---

Gene ID: 54246

---

NCBI Accession: [NM\\_019303](#), [NP\\_062176](#)

---

UniProt: [O35293](#)

---

## Application Details

---

Application Notes: Optimal working dilutions should be determined experimentally by the investigator.

---

Comment: Antigen size: 491 AA

---

Restrictions: For Research Use only

---

## Handling

---

Format: Liquid

---

Concentration: Lot specific

---

Buffer: Liquid. Purified antibody supplied in 1x PBS buffer with 0.09 % (w/v) sodium azide and 2 % sucrose.

---

Preservative: Sodium azide

---

Precaution of Use: This product contains Sodium azide: a POISONOUS AND HAZARDOUS SUBSTANCE which should be handled by trained staff only.

---

Handling Advice: Avoid repeated freeze-thaw cycles.

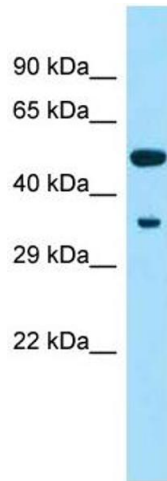
---

Storage: -20 °C

---

Storage Comment: For short term use, store at 2-8°C up to 1 week. For long term storage, store at -20°C in small aliquots to prevent freeze-thaw cycles.

---



### Western Blotting

**Image 1.** WB Suggested Anti-Cyp2f4 Antibody Titration: 1.0 ug/ml Positive Control: Rat Muscle