



Datasheet for ABIN2788350
anti-CYP11B1 antibody (Middle Region)



[Go to Product page](#)

2 Images

Overview

Quantity:	100 µL
Target:	CYP11B1
Binding Specificity:	Middle Region
Reactivity:	Human, Rat, Horse
Host:	Rabbit
Clonality:	Polyclonal
Conjugate:	This CYP11B1 antibody is un-conjugated
Application:	Western Blotting (WB)

Product Details

Immunogen:	The immunogen is a synthetic peptide directed towards the middle region of human CYP11B1
Sequence:	LALFGERLGL VGHSPSSASL NFLHALEVMF KSTVQLMFMP RLSLRWTSPK
Predicted Reactivity:	Horse: 79%, Human: 100%, Rat: 79%
Characteristics:	This is a rabbit polyclonal antibody against CYP11B1. It was validated on Western Blot.
Purification:	Affinity Purified

Target Details

Target:	CYP11B1
Alternative Name:	CYP11B1 (CYP11B1 Products)
Background:	This gene encodes a member of the cytochrome P450 superfamily of enzymes. The

Target Details

cytochrome P450 proteins are monooxygenases which catalyze many reactions involved in drug metabolism and synthesis of cholesterol, steroids and other lipids. This protein localizes to the mitochondrial inner membrane and is involved in the conversion of progesterone to cortisol in the adrenal cortex. Mutations in this gene cause congenital adrenal hyperplasia due to 11-beta-hydroxylase deficiency. Transcript variants encoding different isoforms have been noted for this gene.

Alias Symbols: CPN1, CYP11B, DKFZp686B05283, FHI, FLJ36771, P450C11

Protein Interaction Partner: CYP11B2,

Protein Size: 503

Molecular Weight:	55 kDa
Gene ID:	1584
NCBI Accession:	NM_000497 , NP_000488
UniProt:	P15538
Pathways:	Metabolism of Steroid Hormones and Vitamin D , Steroid Hormone Biosynthesis , Regulation of Systemic Arterial Blood Pressure by Hormones , C21-Steroid Hormone Metabolic Process , Carbohydrate Homeostasis

Application Details

Application Notes:	Optimal working dilutions should be determined experimentally by the investigator.
Comment:	Antigen size: 503 AA
Restrictions:	For Research Use only

Handling

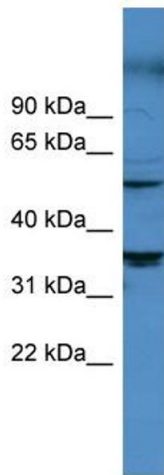
Format:	Liquid
Concentration:	Lot specific
Buffer:	Liquid. Purified antibody supplied in 1x PBS buffer with 0.09 % (w/v) sodium azide and 2 % sucrose.
Preservative:	Sodium azide
Precaution of Use:	This product contains Sodium azide: a POISONOUS AND HAZARDOUS SUBSTANCE which should be handled by trained staff only.
Handling Advice:	Avoid repeated freeze-thaw cycles.

Handling

Storage: -20 °C

Storage Comment: For short term use, store at 2-8°C up to 1 week. For long term storage, store at -20°C in small aliquots to prevent freeze-thaw cycles.

Images



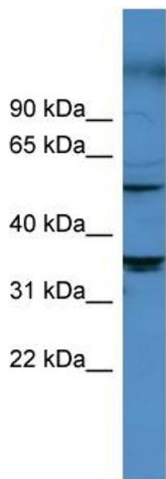
Western Blotting

Image 1. WB Suggested Anti-CYP11B1 Antibody Titration:

0.2-1 ug/ml

ELISA Titer: 1:62500

Positive Control: HeLa cell lysate



Rabbit Anti-CYP11B1 Antibody
Catalog Number: ARP60141
Lot Number: QC31021
Lane: HeLa Cell Lysate

Antibody Titration: 1.0 µg/ml
Gel Concentration: 12%

Western Blotting

Image 2. WB Suggested Anti-CYP11B1

Antibody Titration: 0.2-1 µg/mL ELISA Titer: 1:2500

Positive Control: HeLa cell lysate