

Datasheet for ABIN2788353
anti-CYP24A1 antibody (C-Term)



[Go to Product page](#)

2 Images

Overview

Quantity:	100 µL
Target:	CYP24A1
Binding Specificity:	C-Term
Reactivity:	Human, Mouse, Rat, Dog, Rabbit, Guinea Pig, Cow, Horse
Host:	Rabbit
Clonality:	Polyclonal
Conjugate:	This CYP24A1 antibody is un-conjugated
Application:	Western Blotting (WB)

Product Details

Immunogen:	The immunogen is a synthetic peptide directed towards the C terminal region of human CYP24A1
Sequence:	LNTKVWQDHT LAWDTIFKSV KACIDNRLEK YSQQPSADFL CDIYHQNRLS
Predicted Reactivity:	Cow: 86%, Dog: 86%, Guinea Pig: 86%, Horse: 86%, Human: 100%, Mouse: 86%, Rabbit: 100%, Rat: 86%
Characteristics:	This is a rabbit polyclonal antibody against CYP24A1. It was validated on Western Blot.
Purification:	Affinity Purified

Target Details

Target:	CYP24A1
---------	---------

Target Details

Alternative Name:	CYP24A1 (CYP24A1 Products)
Background:	<p>CYP24A1 is a member of the cytochrome P450 superfamily of enzymes. The cytochrome P450 proteins are monooxygenases which catalyze many reactions involved in drug metabolism and synthesis of cholesterol, steroids and other lipids. This mitochondrial protein initiates the degradation of 1,25-dihydroxyvitamin D3, the physiologically active form of vitamin D3, by hydroxylation of the side chain. In regulating the level of vitamin D3, this enzyme plays a role in calcium homeostasis and the vitamin D endocrine system.</p> <p>Alias Symbols: CP24, CYP24, MGC126273, MGC126274, P450-CC24, HCAI</p> <p>Protein Interaction Partner: Dlg4, UBC,</p> <p>Protein Size: 514</p>
Molecular Weight:	55 kDa
Gene ID:	1591
NCBI Accession:	NM_000782 , NP_000773
UniProt:	Q07973
Pathways:	Metabolism of Steroid Hormones and Vitamin D

Application Details

Application Notes:	Optimal working dilutions should be determined experimentally by the investigator.
Comment:	Antigen size: 514 AA
Restrictions:	For Research Use only

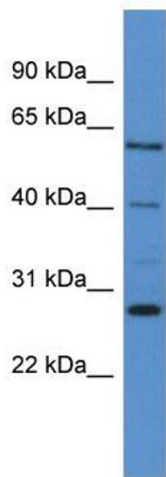
Handling

Format:	Liquid
Concentration:	Lot specific
Buffer:	Liquid. Purified antibody supplied in 1x PBS buffer with 0.09 % (w/v) sodium azide and 2 % sucrose.
Preservative:	Sodium azide
Precaution of Use:	This product contains Sodium azide: a POISONOUS AND HAZARDOUS SUBSTANCE which should be handled by trained staff only.
Handling Advice:	Avoid repeated freeze-thaw cycles.

Handling

Storage:	-20 °C
Storage Comment:	For short term use, store at 2-8°C up to 1 week. For long term storage, store at -20°C in small aliquots to prevent freeze-thaw cycles.

Images



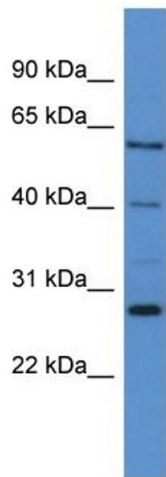
Western Blotting

Image 1. WB Suggested Anti-CYP24A1 Antibody Titration:

0.2-1 ug/ml

ELISA Titer: 1:1562500

Positive Control: MDA-MB-435S cell lysate



Rabbit Anti-CYP24A1 Antibody
Catalog Number: ARP60147
Lot Number: QC31025
Lane: MDA-MB-435S Cell Lysate

Antibody Titration: 1.0µg/ml
Gel Concentration: 12%

Western Blotting

Image 2. WB Suggested Anti-CYP24A1

Antibody Titration: 0.2-1 µg/mL ELISA Titer: 1:1562500

Positive Control: MDA-MB-435S cell lysate