

Datasheet for ABIN2788354
anti-CYP51A1 antibody (N-Term)

2 Images

[Go to Product page](#)

Overview

Quantity:	100 µL
Target:	CYP51A1
Binding Specificity:	N-Term
Reactivity:	Human, Mouse, Rat, Dog, Guinea Pig, Horse, Cow, Rabbit, Zebrafish (Danio rerio)
Host:	Rabbit
Clonality:	Polyclonal
Conjugate:	This CYP51A1 antibody is un-conjugated
Application:	Western Blotting (WB)

Product Details

Immunogen:	The immunogen is a synthetic peptide directed towards the N terminal region of human CYP51A1
Sequence:	TYLLGSDAAA LLFNSKNEDL NAEDVYSRLT TPVFGKGVAY DVPNPVFLEQ
Predicted Reactivity:	Cow: 93%, Dog: 100%, Guinea Pig: 100%, Horse: 100%, Human: 100%, Mouse: 93%, Rabbit: 93%, Rat: 100%, Zebrafish: 93%
Characteristics:	This is a rabbit polyclonal antibody against CYP51A1. It was validated on Western Blot.
Purification:	Affinity Purified

Target Details

Target:	CYP51A1
---------	---------

Target Details

Alternative Name:	CYP51A1 (CYP51A1 Products)
Background:	<p>This gene encodes a member of the cytochrome P450 superfamily of enzymes. The cytochrome P450 proteins are monooxygenases which catalyze many reactions involved in drug metabolism and synthesis of cholesterol, steroids and other lipids. This endoplasmic reticulum protein participates in the synthesis of cholesterol by catalyzing the removal of the 14alpha-methyl group from lanosterol. Homologous genes are found in all three eukaryotic phyla, fungi, plants, and animals, suggesting that this is one of the oldest cytochrome P450 genes. Two transcript variants encoding different isoforms have been found for this gene.</p> <p>Alias Symbols: CP51, CYP51, CYPL1, LDM, P450-14DM, P450L1</p> <p>Protein Interaction Partner: UBC, ZNF420, ELAVL1,</p> <p>Protein Size: 509</p>
Molecular Weight:	57 kDa
Gene ID:	1595
NCBI Accession:	NM_000786 , NP_000777
UniProt:	Q16850

Application Details

Application Notes:	Optimal working dilutions should be determined experimentally by the investigator.
Comment:	Antigen size: 509 AA
Restrictions:	For Research Use only

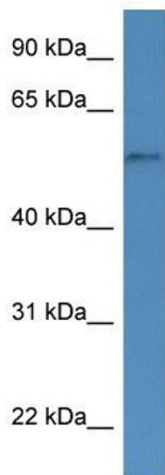
Handling

Format:	Liquid
Concentration:	Lot specific
Buffer:	Liquid. Purified antibody supplied in 1x PBS buffer with 0.09 % (w/v) sodium azide and 2 % sucrose.
Preservative:	Sodium azide
Precaution of Use:	This product contains Sodium azide: a POISONOUS AND HAZARDOUS SUBSTANCE which should be handled by trained staff only.
Handling Advice:	Avoid repeated freeze-thaw cycles.

Handling

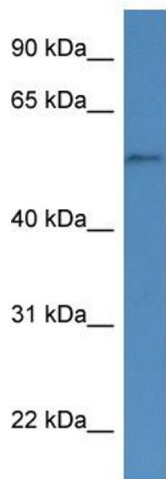
Storage:	-20 °C
Storage Comment:	For short term use, store at 2-8°C up to 1 week. For long term storage, store at -20°C in small aliquots to prevent freeze-thaw cycles.

Images



Western Blotting

Image 1. WB Suggested Anti-CYP51A1 Antibody Titration:
0.2-1 ug/ml
ELISA Titer: 1:312500
Positive Control: Hela cell lysate



Rabbit Anti-CYP51A1 Antibody
Catalog Number: ARP60153
Lot Number: QC31028
Lane: Hela Cell Lysate

Antibody Titration: 0.25µg/ml
Gel Concentration: 12%

Western Blotting

Image 2. WB Suggested Anti-CYP51A1
Antibody Titration: 0.2-1 µg/mL ELISA Titer: 1:12500
Positive Control: Hela cell lysate