

Datasheet for ABIN2788359  
**anti-AKR1C1 antibody (N-Term)**[Go to Product page](#)

## 2 Images

## Overview

Quantity:	100 µL
Target:	AKR1C1 (DDH)
Binding Specificity:	N-Term
Reactivity:	Human, Mouse, Rat, Horse, Rabbit, Cow, Dog, Guinea Pig, Sheep
Host:	Rabbit
Clonality:	Polyclonal
Conjugate:	This AKR1C1 antibody is un-conjugated
Application:	Western Blotting (WB), Immunohistochemistry (IHC)

## Product Details

Immunogen:	The immunogen is a synthetic peptide directed towards the N terminal region of human AKR1C1
Sequence:	DSAHLYNNEE QVGLAIRSKI ADGSVKREDI FYTSKLWCNS HRPELVRPAL
Predicted Reactivity:	Cow: 93%, Dog: 92%, Guinea Pig: 93%, Horse: 86%, Human: 100%, Mouse: 93%, Rabbit: 93%, Rat: 93%, Sheep: 86%
Characteristics:	This is a rabbit polyclonal antibody against AKR1C1. It was validated on Western Blot.
Purification:	Affinity Purified

## Target Details

Target:	AKR1C1 (DDH)
---------	--------------

## Target Details

Alternative Name:	AKR1C1 ( <a href="#">DDH Products</a> )
Background:	<p>This gene encodes a member of the aldo/keto reductase superfamily, which consists of more than 40 known enzymes and proteins. These enzymes catalyze the conversion of aldehydes and ketones to their corresponding alcohols by utilizing NADH and/or NADPH as cofactors. The enzymes display overlapping but distinct substrate specificity. This enzyme catalyzes the reaction of progesterone to the inactive form 20-alpha-hydroxy-progesterone. This gene shares high sequence identity with three other gene members and is clustered with those three genes at chromosome 10p15-p14.</p> <p>Alias Symbols: 2-ALPHA-HSD, 20-ALPHA-HSD, C9, DD1, DDH, DDH1, H-37, HAKRC, MBAB, MGC8954, HBAB, DD1/DD2</p> <p>Protein Interaction Partner: PTPN3, UBC, FN1, COMMD8, MAPK3, AKR1C1,</p> <p>Protein Size: 323</p>
Molecular Weight:	36 kDa
Gene ID:	1645
NCBI Accession:	<a href="#">NM_001353</a> , <a href="#">NP_001344</a>
UniProt:	<a href="#">Q04828</a>
Pathways:	<a href="#">Steroid Hormone Biosynthesis</a> , <a href="#">C21-Steroid Hormone Metabolic Process</a>

## Application Details

Application Notes:	Optimal working dilutions should be determined experimentally by the investigator.
Comment:	Antigen size: 323 AA
Restrictions:	For Research Use only

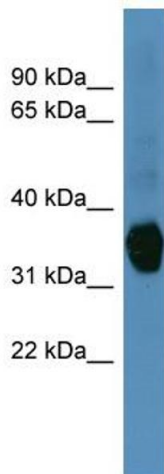
## Handling

Format:	Liquid
Concentration:	Lot specific
Buffer:	Liquid. Purified antibody supplied in 1x PBS buffer with 0.09 % (w/v) sodium azide and 2 % sucrose.
Preservative:	Sodium azide
Precaution of Use:	This product contains Sodium azide: a POISONOUS AND HAZARDOUS SUBSTANCE which should be handled by trained staff only.

## Handling

Handling Advice:	Avoid repeated freeze-thaw cycles.
Storage:	-20 °C
Storage Comment:	For short term use, store at 2-8°C up to 1 week. For long term storage, store at -20°C in small aliquots to prevent freeze-thaw cycles.

## Images



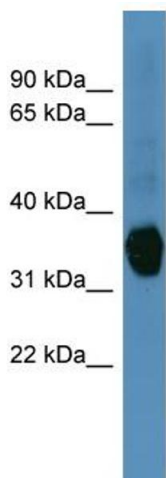
### Western Blotting

#### Image 1. WB Suggested Anti-AKR1C1 Antibody Titration:

0.2-1 ug/ml

**ELISA Titer:** 1:62500

**Positive Control:** Human Liver



Rabbit Anti-AKR1C1 Antibody  
Catalog Number: ARP60165  
Lot Number: QC31034  
Lane: Fetal Liver Lysate

Antibody Titration: 1.0µg/ml  
Gel Concentration: 12%

### Western Blotting

#### Image 2. WB Suggested Anti-AKR1C1

Antibody Titration: 0.2-1 µg/mL ELISA Titer: 1::2500

Positive Control: Human Liver