

Datasheet for ABIN2788370  
**anti-OVGP1 antibody (C-Term)**[Go to Product page](#)

## 2 Images

## Overview

Quantity:	100 µL
Target:	OVGP1
Binding Specificity:	C-Term
Reactivity:	Human
Host:	Rabbit
Clonality:	Polyclonal
Conjugate:	This OVGP1 antibody is un-conjugated
Application:	Western Blotting (WB)

## Product Details

Immunogen:	The immunogen is a synthetic peptide directed towards the C terminal region of human OVGP1
Sequence:	QLPEQTPLAF DNRFPVIYGN HSSVNSVTPQ TSPLSLKKEI PENSAVDEEA
Predicted Reactivity:	Human: 100%
Characteristics:	This is a rabbit polyclonal antibody against OVGP1. It was validated on Western Blot.
Purification:	Affinity Purified

## Target Details

Target:	OVGP1
Alternative Name:	OVGP1 ( <a href="#">OVGP1 Products</a> )
Background:	OVGP1 is a large, carbohydrate-rich, epithelial glycoprotein with numerous O-glycosylation sites

## Target Details

located within threonine, serine, and proline-rich tandem repeats. Regulation of expression may be estrogen-dependent. Gene expression and protein secretion occur during late follicular development through early cleavage-stage embryonic development. The protein is secreted from non-ciliated oviductal epithelial cells and associates with ovulated oocytes, blastomeres, and spermatozoan acrosomal regions.

Alias Symbols: CHIT5, EGP, MUC9, OGP

Protein Interaction Partner: ASL, RASA4, STATH, MYH9,

Protein Size: 678

Molecular Weight: 75 kDa

Gene ID: 5016

NCBI Accession: [NM\\_002557](#), [NP\\_002548](#)

UniProt: [Q12889](#)

## Application Details

Application Notes: Optimal working dilutions should be determined experimentally by the investigator.

Comment: Antigen size: 678 AA

Restrictions: For Research Use only

## Handling

Format: Liquid

Concentration: Lot specific

Buffer: Liquid. Purified antibody supplied in 1x PBS buffer with 0.09 % (w/v) sodium azide and 2 % sucrose.

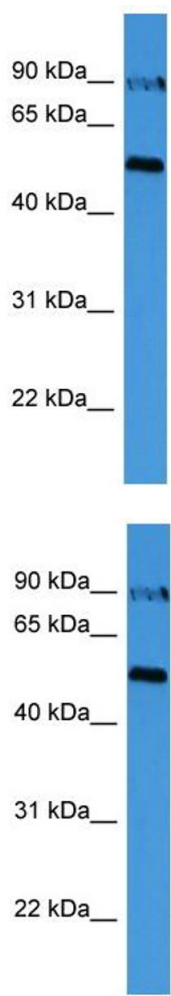
Preservative: Sodium azide

Precaution of Use: This product contains Sodium azide: a POISONOUS AND HAZARDOUS SUBSTANCE which should be handled by trained staff only.

Handling Advice: Avoid repeated freeze-thaw cycles.

Storage: -20 °C

Storage Comment: For short term use, store at 2-8°C up to 1 week. For long term storage, store at -20°C in small aliquots to prevent freeze-thaw cycles.



**Western Blotting**

**Image 1. WB Suggested Anti-OVGP1 Antibody Titration:**

0.2-1 ug/ml

**ELISA Titer:** 1:62500

**Positive Control:** 721\_B cell lysate

**Western Blotting**

**Image 2. WB Suggested Anti-OVGP1**

Antibody Titration: 0.2-1 µg/mL ELISA Titer: 1::2500

Positive Control: 21\_B cell lysate

OVGP1 is supported by BioGPS gene expression data to be expressed in 721\_B