

Datasheet for ABIN2788375
anti-BCAM antibody (C-Term)



[Go to Product page](#)

1 Image

Overview

Quantity:	100 µL
Target:	BCAM
Binding Specificity:	C-Term
Reactivity:	Human, Cow, Dog, Rabbit, Horse, Pig
Host:	Rabbit
Clonality:	Polyclonal
Conjugate:	This BCAM antibody is un-conjugated
Application:	Western Blotting (WB)

Product Details

Immunogen:	The immunogen is a synthetic peptide directed towards the C terminal region of human BCAM
Sequence:	SALSRDGLISC EASNPHGNKR HVFHFQTVSP QTSQAGVAVM AVAVSVGLLL
Predicted Reactivity:	Cow: 79%, Dog: 86%, Horse: 93%, Human: 100%, Pig: 93%, Rabbit: 86%
Characteristics:	This is a rabbit polyclonal antibody against BCAM. It was validated on Western Blot.
Purification:	Affinity Purified

Target Details

Target:	BCAM
Alternative Name:	BCAM (BCAM Products)
Background:	Lutheran blood group glycoprotein is a member of the immunoglobulin superfamily and a

Target Details

receptor for the extracellular matrix protein, laminin. The protein contains five, N-terminus, extracellular immunoglobulin domains, a single transmembrane domain, and a short, C-terminal cytoplasmic tail. This protein may play a role in epithelial cell cancer and in vaso-occlusion of red blood cells in sickle cell disease. Two transcript variants encoding different isoforms have been found for this gene.

Alias Symbols: AU, CD239, LU, MSK19

Protein Interaction Partner: KLHL2, SUMO1, UBE2I, UBC, LAMA5, EPB41,

Protein Size: 628

Molecular Weight: 64 kDa

Gene ID: 4059

NCBI Accession: [NM_005581](#), [NP_005572](#)

UniProt: [P50895](#)

Application Details

Application Notes: Optimal working dilutions should be determined experimentally by the investigator.

Comment: Antigen size: 628 AA

Restrictions: For Research Use only

Handling

Format: Liquid

Concentration: Lot specific

Buffer: Liquid. Purified antibody supplied in 1x PBS buffer with 0.09 % (w/v) sodium azide and 2 % sucrose.

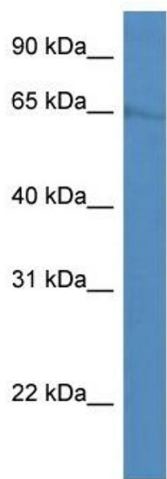
Preservative: Sodium azide

Precaution of Use: This product contains Sodium azide: a POISONOUS AND HAZARDOUS SUBSTANCE which should be handled by trained staff only.

Handling Advice: Avoid repeated freeze-thaw cycles.

Storage: -20 °C

Storage Comment: For short term use, store at 2-8°C up to 1 week. For long term storage, store at -20°C in small aliquots to prevent freeze-thaw cycles.



Western Blotting

Image 1. WB Suggested Anti-BCAM Antibody Titration: 0.2-1 ug/ml ELISA Titer: 1:1562500 Positive Control: HepG2 cell lysate BCAM is strongly supported by BioGPS gene expression data to be expressed in Human HepG2 cells