

Datasheet for ABIN2788381
anti-FAM126A antibody (C-Term)[Go to Product page](#)

1 Image

Overview

Quantity:	100 µL
Target:	FAM126A
Binding Specificity:	C-Term
Reactivity:	Human, Mouse, Cow, Dog, Rat, Guinea Pig, Horse, Rabbit
Host:	Rabbit
Clonality:	Polyclonal
Conjugate:	This FAM126A antibody is un-conjugated
Application:	Western Blotting (WB)

Product Details

Immunogen:	The immunogen is a synthetic peptide directed towards the C terminal region of human FAM126A
Sequence:	MEISEVDEGF YSRAASSTSQ SGLSNSSHNC SNKPSIGKNH RRSGGSKTGG
Predicted Reactivity:	Cow: 79%, Dog: 79%, Guinea Pig: 93%, Horse: 86%, Human: 100%, Mouse: 85%, Rabbit: 86%, Rat: 85%
Characteristics:	This is a rabbit polyclonal antibody against FAM126A. It was validated on Western Blot.
Purification:	Affinity Purified

Target Details

Target:	FAM126A
---------	---------

Target Details

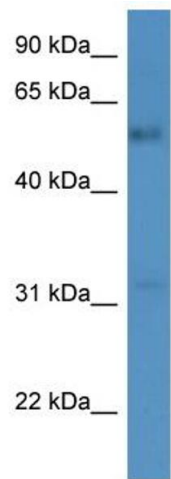
Alternative Name:	FAM126A (FAM126A Products)
Background:	<p>FAM126A may play a part in the beta-catenin/Lef signaling pathway. Expression of FAM126A gene is down-regulated by beta-catenin. Defects in FAM126A gene are a cause of hypomyelination with congenital cataract (HCC).</p> <p>Alias Symbols: DRCTNNB1A, HCC, HLD5, HYCC1</p> <p>Protein Size: 521</p>
Molecular Weight:	57 kDa
Gene ID:	84668
NCBI Accession:	NM_032581 , NP_115970
UniProt:	Q9BYI3

Application Details

Application Notes:	Optimal working dilutions should be determined experimentally by the investigator.
Comment:	Antigen size: 521 AA
Restrictions:	For Research Use only

Handling

Format:	Liquid
Concentration:	Lot specific
Buffer:	Liquid. Purified antibody supplied in 1x PBS buffer with 0.09 % (w/v) sodium azide and 2 % sucrose.
Preservative:	Sodium azide
Precaution of Use:	This product contains Sodium azide: a POISONOUS AND HAZARDOUS SUBSTANCE which should be handled by trained staff only.
Handling Advice:	Avoid repeated freeze-thaw cycles.
Storage:	-20 °C
Storage Comment:	For short term use, store at 2-8°C up to 1 week. For long term storage, store at -20°C in small aliquots to prevent freeze-thaw cycles.



Western Blotting

Image 1.