

Datasheet for ABIN2788383
anti-HINT2 antibody (Middle Region)[Go to Product page](#)

1 Image

Overview

Quantity:	100 µL
Target:	HINT2
Binding Specificity:	Middle Region
Reactivity:	Human, Mouse, Cow, Dog, Guinea Pig, Rabbit, Horse, Rat
Host:	Rabbit
Clonality:	Polyclonal
Conjugate:	This HINT2 antibody is un-conjugated
Application:	Western Blotting (WB)

Product Details

Sequence:	VIPRKPIPRI SQAEEDDQQL LGHLLLVAKK IAQAQGLKDG YRLVVNDGKM
Predicted Reactivity:	Cow: 100%, Dog: 100%, Guinea Pig: 100%, Horse: 93%, Human: 100%, Mouse: 93%, Rabbit: 100%, Rat: 93%
Characteristics:	This is a rabbit polyclonal antibody against Hint2. It was validated on Western Blot.
Purification:	Affinity Purified

Target Details

Target:	HINT2
Alternative Name:	Hint2 (HINT2 Products)
Background:	The function of this protein is unknown.

Target Details

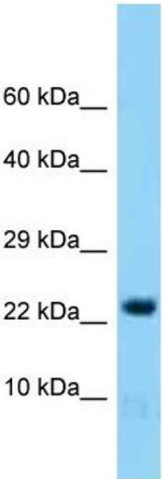
	Alias Symbols: 1190005L05Rik
	Protein Size: 163
Molecular Weight:	17 kDa
Gene ID:	68917
NCBI Accession:	NM_026871 , NP_081147
UniProt:	Q9D0S9

Application Details

Application Notes:	Optimal working dilutions should be determined experimentally by the investigator.
Comment:	Antigen size: 163 AA
Restrictions:	For Research Use only

Handling

Format:	Liquid
Concentration:	Lot specific
Buffer:	Liquid. Purified antibody supplied in 1x PBS buffer with 0.09 % (w/v) sodium azide and 2 % sucrose.
Preservative:	Sodium azide
Precaution of Use:	This product contains Sodium azide: a POISONOUS AND HAZARDOUS SUBSTANCE which should be handled by trained staff only.
Handling Advice:	Avoid repeated freeze-thaw cycles.
Storage:	-20 °C
Storage Comment:	For short term use, store at 2-8°C up to 1 week. For long term storage, store at -20°C in small aliquots to prevent freeze-thaw cycles.



Western Blotting

Image 1.