

Datasheet for ABIN2788384  
**anti-HINT2 antibody (C-Term)**[Go to Product page](#)

## 1 Image

## Overview

Quantity:	100 µL
Target:	HINT2
Binding Specificity:	C-Term
Reactivity:	Human, Cow, Dog, Guinea Pig, Rabbit, Horse, Pig
Host:	Rabbit
Clonality:	Polyclonal
Conjugate:	This HINT2 antibody is un-conjugated
Application:	Western Blotting (WB)

## Product Details

Immunogen:	The immunogen is a synthetic peptide directed towards the C terminal region of human HINT2
Sequence:	RISQAEEEDQ QLLGHLLLVA KQTAKEGLG DGYRLVINDG KLGAQSVYHL
Predicted Reactivity:	Cow: 93%, Dog: 93%, Guinea Pig: 86%, Horse: 93%, Human: 100%, Pig: 93%, Rabbit: 93%
Characteristics:	This is a rabbit polyclonal antibody against HINT2. It was validated on Western Blot.
Purification:	Affinity Purified

## Target Details

Target:	HINT2
Alternative Name:	HINT2 ( <a href="#">HINT2 Products</a> )
Background:	Histidine triad proteins, such as HINT2, are nucleotide hydrolases and transferases that act on

## Target Details

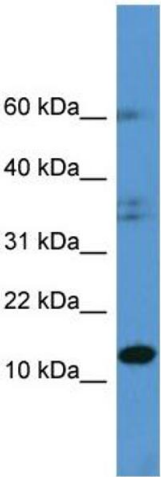
	the alpha-phosphate of ribonucleotides
	Alias Symbols: HIT-17
	Protein Interaction Partner: APP, UBC,
	Protein Size: 163
Molecular Weight:	17 kDa
Gene ID:	84681
NCBI Accession:	<a href="#">NM_032593</a> , <a href="#">NP_115982</a>
UniProt:	<a href="#">Q9BX68</a>

## Application Details

Application Notes:	Optimal working dilutions should be determined experimentally by the investigator.
Comment:	Antigen size: 163 AA
Restrictions:	For Research Use only

## Handling

Format:	Liquid
Concentration:	Lot specific
Buffer:	Liquid. Purified antibody supplied in 1x PBS buffer with 0.09 % (w/v) sodium azide and 2 % sucrose.
Preservative:	Sodium azide
Precaution of Use:	This product contains Sodium azide: a POISONOUS AND HAZARDOUS SUBSTANCE which should be handled by trained staff only.
Handling Advice:	Avoid repeated freeze-thaw cycles.
Storage:	-20 °C
Storage Comment:	For short term use, store at 2-8°C up to 1 week. For long term storage, store at -20°C in small aliquots to prevent freeze-thaw cycles.



Western Blotting

Image 1.