

Datasheet for ABIN2788386

anti-Junctophilin 4 antibody (C-Term)[Go to Product page](#)**1** Image

Overview

Quantity:	100 µL
Target:	Junctophilin 4 (JPH4)
Binding Specificity:	C-Term
Reactivity:	Human, Mouse, Rat, Cow, Guinea Pig, Horse, Rabbit
Host:	Rabbit
Clonality:	Polyclonal
Conjugate:	This Junctophilin 4 antibody is un-conjugated
Application:	Western Blotting (WB)

Product Details

Immunogen:	The immunogen is a synthetic peptide directed towards the C-terminal region of human JPH4
Sequence:	AGYEADEAG MQGPGPRDGS PLLGGCSDSS GSLREEEGED EEPLPPLRAP
Predicted Reactivity:	Cow: 100%, Guinea Pig: 100%, Horse: 100%, Human: 100%, Mouse: 100%, Rabbit: 100%, Rat: 100%
Characteristics:	This is a rabbit polyclonal antibody against JPH4. It was validated on Western Blot.
Purification:	Affinity Purified

Target Details

Target:	Junctophilin 4 (JPH4)
Alternative Name:	JPH4 (JPH4 Products)

Target Details

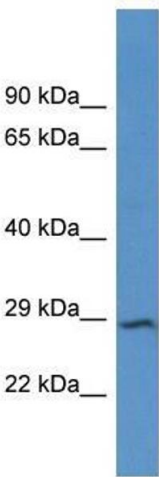
Background:	<p>This gene encodes a member of the junctophilin family of transmembrane proteins that are involved in the formation of the junctional membrane complexes between the plasma membrane and the endoplasmic/sarcoplasmic reticulum in excitable cells. The encoded protein contains a conserved N-terminal repeat region called the membrane occupation and recognition nexus sequence that is found in other members of the junctophilin family.</p> <p>Alternative splicing results in multiple transcript variants.</p> <p>Alias Symbols: JP4, JPHL1</p> <p>Protein Size: 293</p>
Molecular Weight:	32 kDa
Gene ID:	84502
NCBI Accession:	NM_001146028 , NP_001139500
UniProt:	Q96JJ6

Application Details

Application Notes:	Optimal working dilution should be determined by the investigator.
Restrictions:	For Research Use only

Handling

Format:	Liquid
Concentration:	1 mg/mL
Buffer:	Liquid. Purified antibody supplied in 1x PBS buffer with 0.09 % (w/v) sodium azide and 2 % sucrose.
Preservative:	Sodium azide
Precaution of Use:	This product contains Sodium azide: a POISONOUS AND HAZARDOUS SUBSTANCE which should be handled by trained staff only.
Handling Advice:	Avoid repeat freeze-thaw cycles.
Storage:	-20 °C
Storage Comment:	For short term use, store at 2-8°C up to 1 week. For long term storage, store at -20°C in small aliquots to prevent freeze-thaw cycles.



Western Blotting

Image 1.