



[Go to Product page](#)

Datasheet for ABIN2788390
anti-LPA antibody (N-Term)

2 Images

Overview

Quantity:	100 µL
Target:	LPA (APOA)
Binding Specificity:	N-Term
Reactivity:	Human
Host:	Rabbit
Clonality:	Polyclonal
Conjugate:	This LPA antibody is un-conjugated
Application:	Western Blotting (WB)

Product Details

Immunogen:	The immunogen is a synthetic peptide directed towards the N terminal region of human LPA
Sequence:	VPDPSTEASS EEAPTEQSPG VQDCYHGDGQ SYRGSFSTTV TGRTCQSWSS
Predicted Reactivity:	Human: 100%
Characteristics:	This is a rabbit polyclonal antibody against LPA. It was validated on Western Blot.
Purification:	Affinity Purified

Target Details

Target:	LPA (APOA)
Alternative Name:	LPA (APOA Products)
Background:	LPA is a serine proteinase that inhibits the activity of tissue-type plasminogen activator I. The

Target Details

protein constitutes a substantial portion of lipoprotein(a) and is proteolytically cleaved, resulting in fragments that attach to atherosclerotic lesions and promote thrombogenesis. Elevated plasma levels of this protein are linked to atherosclerosis. Depending on the individual, the protein contains 2-43 copies of kringle-type domains.

Alias Symbols: LP, AK38, APOA, LPA

Protein Interaction Partner: CANX, FBLN5, MMP12, LRP2, APOH, FN1, FGB, ELANE, CELA1,

Protein Size: 1169

Molecular Weight: 120 kDa

Gene ID: 4018

NCBI Accession: [NM_005577](#)

UniProt: [P08519](#)

Application Details

Application Notes: Optimal working dilutions should be determined experimentally by the investigator.

Comment: Antigen size: 1169 AA

Restrictions: For Research Use only

Handling

Format: Liquid

Concentration: Lot specific

Buffer: Liquid. Purified antibody supplied in 1x PBS buffer with 0.09 % (w/v) sodium azide and 2 % sucrose.

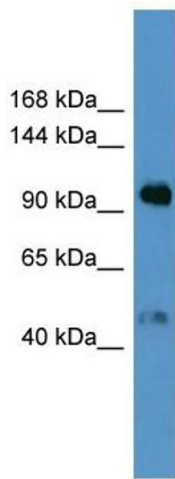
Preservative: Sodium azide

Precaution of Use: This product contains Sodium azide: a POISONOUS AND HAZARDOUS SUBSTANCE which should be handled by trained staff only.

Handling Advice: Avoid repeated freeze-thaw cycles.

Storage: -20 °C

Storage Comment: For short term use, store at 2-8°C up to 1 week. For long term storage, store at -20°C in small aliquots to prevent freeze-thaw cycles.

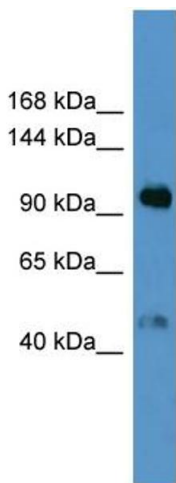


Western Blotting

Image 1. WB Suggested Anti-LPA Antibody Titration: 0.2-1 ug/ml

ELISA Titer: 1:312500

Positive Control: Jurkat cell lysate



Rabbit Anti-LPA Antibody
Catalog Number: ARP60282
Lot Number: QC31185
Lane: Jurkat Cell Lysate

Antibody Titration: 1.0µg/ml
Gel Concentration: 6-18%

Western Blotting

Image 2. WB Suggested Anti-LPA

Antibody Titration: 0.2-1 µg/mL ELISA Titer: 1:12500

Positive Control: Jurkat cell lysate