

Datasheet for ABIN2788392  
**anti-LTBP1 antibody (C-Term)**[Go to Product page](#)

## 2 Images

## Overview

Quantity:	100 µL
Target:	LTBP1
Binding Specificity:	C-Term
Reactivity:	Mouse, Human, Rat, Cow, Dog, Guinea Pig, Horse, Rabbit
Host:	Rabbit
Clonality:	Polyclonal
Conjugate:	This LTBP1 antibody is un-conjugated
Application:	Western Blotting (WB)

## Product Details

Immunogen:	The immunogen is a synthetic peptide directed towards the C terminal region of human LTBP1
Sequence:	NVCANGDCSN LEGSYMCSCH KGYTRTPDHK HCRDIDECQQ GNLCVNGQCK
Predicted Reactivity:	Cow: 92%, Dog: 92%, Guinea Pig: 83%, Horse: 86%, Human: 100%, Mouse: 83%, Rabbit: 92%, Rat: 83%
Characteristics:	This is a rabbit polyclonal antibody against LTBP1. It was validated on Western Blot.
Purification:	Affinity Purified

## Target Details

Target:	LTBP1
Alternative Name:	LTBP1 ( <a href="#">LTBP1 Products</a> )

## Target Details

Background:	<p>The protein encoded by this gene belongs to the family of latent TGF-beta binding proteins (LTBPs). The secretion and activation of TGF-betas is regulated by their association with latency-associated proteins and with latent TGF-beta binding proteins. The product of this gene targets latent complexes of transforming growth factor beta to the extracellular matrix, where the latent cytokine is subsequently activated by several different mechanisms.</p> <p>Alias Symbols: MGC163161</p> <p>Protein Interaction Partner: FBXO6, SMURF1, ATN1, CACNA1A, TGM2, LTBP1, ITGB5, IGFBP3, FN1, FBN1, FBN2, TGFB1,</p> <p>Protein Size: 1396</p>
Molecular Weight:	154 kDa
Gene ID:	4052
NCBI Accession:	<a href="#">NM_000627</a> , <a href="#">NP_000618</a>
Pathways:	<a href="#">Maintenance of Protein Location, Growth Factor Binding</a>

## Application Details

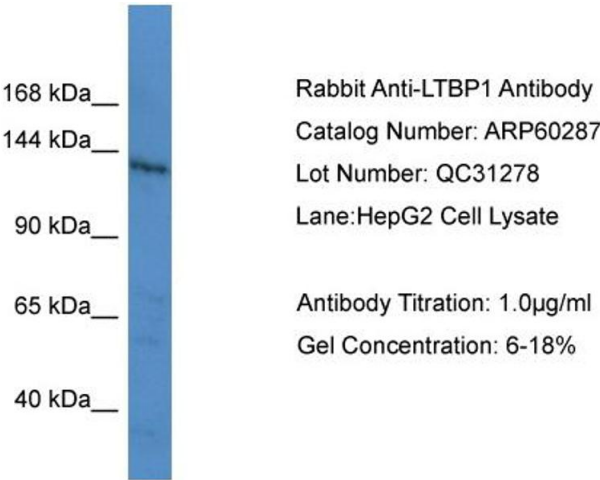
Application Notes:	Optimal working dilutions should be determined experimentally by the investigator.
Comment:	Antigen size: 1396 AA
Restrictions:	For Research Use only

## Handling

Format:	Liquid
Concentration:	Lot specific
Buffer:	Liquid. Purified antibody supplied in 1x PBS buffer with 0.09 % (w/v) sodium azide and 2 % sucrose.
Preservative:	Sodium azide
Precaution of Use:	This product contains Sodium azide: a POISONOUS AND HAZARDOUS SUBSTANCE which should be handled by trained staff only.
Handling Advice:	Avoid repeated freeze-thaw cycles.
Storage:	-20 °C
Storage Comment:	For short term use, store at 2-8°C up to 1 week. For long term storage, store at -20°C in small

aliquots to prevent freeze-thaw cycles.

Images

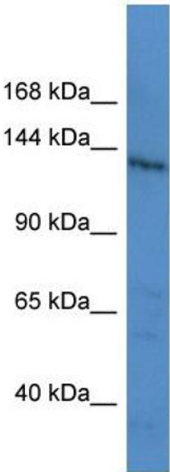


**Western Blotting**

**Image 1. WB Suggested Anti-LTBP1**

Antibody Titration: 0.2-1 µg/mL ELISA Titer: 1:1562500

Positive Control: HepG2 cell lysate



**Western Blotting**

**Image 2. WB Suggested Anti-LTBP1 Antibody Titration:**

0.2-1 ug/ml

**ELISA Titer:** 1:1562500

**Positive Control:** HepG2 cell lysate