

Datasheet for ABIN2788393  
**anti-LTK antibody (N-Term)**[Go to Product page](#)

## 2 Images

## Overview

Quantity:	100 µL
Target:	LTK
Binding Specificity:	N-Term
Reactivity:	Human, Mouse, Guinea Pig, Rabbit
Host:	Rabbit
Clonality:	Polyclonal
Conjugate:	This LTK antibody is un-conjugated
Application:	Western Blotting (WB)

## Product Details

Immunogen:	The immunogen is a synthetic peptide directed towards the N terminal region of human LTK
Sequence:	GGGGRAYLRP RDRGRTQASP EKLENRSEAP GSGGRGGAAG GGGGWTSRAP
Predicted Reactivity:	Guinea Pig: 93%, Human: 100%, Mouse: 79%, Rabbit: 93%
Characteristics:	This is a rabbit polyclonal antibody against LTK. It was validated on Western Blot.
Purification:	Affinity Purified

## Target Details

Target:	LTK
Alternative Name:	LTK ( <a href="#">LTK Products</a> )
Background:	LTK is a member of the ros/insulin receptor family of tyrosine kinases. Tyrosine-specific

## Target Details

phosphorylation of proteins is a key to the control of diverse pathways leading to cell growth and differentiation.

Alias Symbols: TYK1

Protein Interaction Partner: ERRFI1, TNK2, PIK3C2B, SHC1, PTPN1, CBL, RAF1, PLCG1, PIK3R1,

Protein Size: 864

Molecular Weight: 92 kDa

Gene ID: 4058

NCBI Accession: [NM\\_002344](#), [NP\\_002335](#)

UniProt: [P29376](#)

Pathways: [RTK Signaling](#)

## Application Details

Application Notes: Optimal working dilutions should be determined experimentally by the investigator.

Comment: Antigen size: 864 AA

Restrictions: For Research Use only

## Handling

Format: Liquid

Concentration: Lot specific

Buffer: Liquid. Purified antibody supplied in 1x PBS buffer with 0.09 % (w/v) sodium azide and 2 % sucrose.

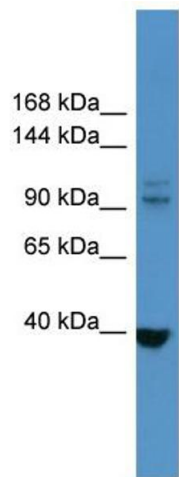
Preservative: Sodium azide

Precaution of Use: This product contains Sodium azide: a POISONOUS AND HAZARDOUS SUBSTANCE which should be handled by trained staff only.

Handling Advice: Avoid repeated freeze-thaw cycles.

Storage: -20 °C

Storage Comment: For short term use, store at 2-8°C up to 1 week. For long term storage, store at -20°C in small aliquots to prevent freeze-thaw cycles.

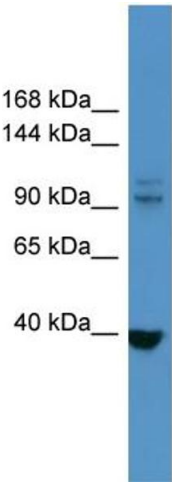


**Western Blotting**

**Image 1. WB Suggested Anti-LTK Antibody Titration:** 0.2-1 ug/ml

**ELISA Titer:** 1:62500

**Positive Control:** Hela cell lysate



Rabbit Anti-LTK Antibody  
Catalog Number: ARP60292  
Lot Number: QC31188  
Lane: Hela Cell Lysate

Antibody Titration: 1.0µg/ml  
Gel Concentration: 6-18%

**Western Blotting**

**Image 2. WB Suggested Anti-LTK**

Antibody Titration: 0.2-1 µg/mL ELISA Titer: 1::2500

Positive Control: Hela cell lysate