

Datasheet for ABIN2788397  
**anti-MAP4 antibody (N-Term)**

## 2 Images

[Go to Product page](#)

## Overview

Quantity:	100 µL
Target:	MAP4
Binding Specificity:	N-Term
Reactivity:	Human
Host:	Rabbit
Clonality:	Polyclonal
Conjugate:	This MAP4 antibody is un-conjugated
Application:	Western Blotting (WB), Immunohistochemistry (IHC)

## Product Details

Immunogen:	The immunogen is a synthetic peptide directed towards the N terminal region of human MAP4
Sequence:	LKETERASPI KMDLAPSKDM GPPKENKKET ERASPIKMDL APSKDMGPPK
Predicted Reactivity:	Human: 100%
Characteristics:	This is a rabbit polyclonal antibody against MAP4. It was validated on Western Blot.
Purification:	Affinity Purified

## Target Details

Target:	MAP4
Alternative Name:	MAP4 ( <a href="#">MAP4 Products</a> )
Background:	MAP4 is a major non-neuronal microtubule-associated protein. This protein contains a domain

## Target Details

similar to the microtubule-binding domains of neuronal microtubule-associated protein (MAP2) and microtubule-associated protein tau (MAPT/TAU). This protein promotes microtubule assembly, and has been shown to counteract destabilization of interphase microtubule catastrophe promotion. Cyclin B was found to interact with this protein, which targets cell division cycle 2 (CDC2) kinase to microtubules. The phosphorylation of this protein affects microtubule properties and cell cycle progression.

Alias Symbols: DKFZp779A1753, MGC8617

Protein Interaction Partner: UBC, LGR4, RPA3, RPA2, RPA1, LSM8, WDHD1, HNRNPR, PDCD6, PPP4R1, MTA2, POLR2C, POLR2A, IARS, HNRNPF, EIF2S1, CSTF2, COG7, TARDBP, BAG3, ERBB2IP, SNTA1, LDLR, IL7R, FN1, TRAF3IP1, RPS20, GRK5, EPS15, AP2M1, USP21, CUL4A, POT1, ISG15, TERF1, SIRT7, SH3KBP1,

Protein Size: 1152

Molecular Weight: 121 kDa

Gene ID: 4134

NCBI Accession: [NM\\_002375](#), [NP\\_002366](#)

UniProt: [P27816](#)

Pathways: [p53 Signaling](#), [Microtubule Dynamics](#)

## Application Details

Application Notes: Optimal working dilutions should be determined experimentally by the investigator.

Comment: Antigen size: 1152 AA

Restrictions: For Research Use only

## Handling

Format: Liquid

Concentration: Lot specific

Buffer: Liquid. Purified antibody supplied in 1x PBS buffer with 0.09 % (w/v) sodium azide and 2 % sucrose.

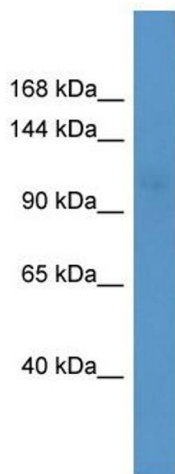
Preservative: Sodium azide

Precaution of Use: This product contains Sodium azide: a POISONOUS AND HAZARDOUS SUBSTANCE which should be handled by trained staff only.

## Handling

Handling Advice:	Avoid repeated freeze-thaw cycles.
Storage:	-20 °C
Storage Comment:	For short term use, store at 2-8°C up to 1 week. For long term storage, store at -20°C in small aliquots to prevent freeze-thaw cycles.

## Images



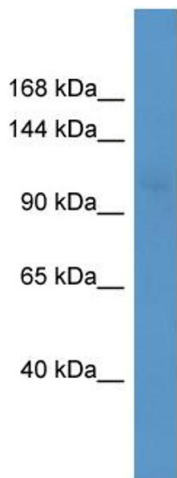
### Western Blotting

#### Image 1. WB Suggested Anti-MAP4 Antibody Titration:

0.2-1 ug/ml

**ELISA Titer:** 1:312500

**Positive Control:** Jurkat cell lysate



Rabbit Anti-MAP4 Antibody  
Catalog Number: ARP60314  
Lot Number: QC31203  
Lane: Jurkat Cell Lysate

Antibody Titration: 1.0µg/ml  
Gel Concentration: 6-18%

### Western Blotting

#### Image 2. WB Suggested Anti-MAP4

Antibody Titration: 0.2-1 µg/mL ELISA Titer: 1:12500

Positive Control: Jurkat cell lysate