



[Go to Product page](#)

Datasheet for ABIN2788399
anti-MAP6 antibody (N-Term)

2 Images

Overview

Quantity:	100 µL
Target:	MAP6
Binding Specificity:	N-Term
Reactivity:	Mouse, Human, Rabbit, Cow, Rat, Dog, Guinea Pig
Host:	Rabbit
Clonality:	Polyclonal
Conjugate:	This MAP6 antibody is un-conjugated
Application:	Western Blotting (WB)

Product Details

Immunogen:	The immunogen is a synthetic peptide directed towards the N terminal region of human MAP6
Sequence:	RPEPSCRPRS EYQPSDAPFE RETQYQKDFR AWPLPRRGDH PWIPKPVQIS
Predicted Reactivity:	Cow: 100%, Dog: 100%, Guinea Pig: 100%, Human: 100%, Mouse: 100%, Rabbit: 100%, Rat: 100%
Characteristics:	This is a rabbit polyclonal antibody against MAP6. It was validated on Western Blot.
Purification:	Affinity Purified

Target Details

Target:	MAP6
Alternative Name:	MAP6 (MAP6 Products)
Background:	This gene encodes a microtubule-associated protein. The encoded protein is a calmodulin-

Target Details

binding and calmodulin-regulated protein that is involved in microtubule stabilization.

Alias Symbols: FLJ41346, KIAA1878, MTAP6, N-STOP, STOP

Protein Interaction Partner: RORB, RARG, RARB, TRAF1, TUBB, NR2F1,

Protein Size: 813

Molecular Weight: 86 kDa

Gene ID: 4135

NCBI Accession: [NM_033063](#), [NP_149052](#)

UniProt: [Q96JE9](#)

Application Details

Application Notes: Optimal working dilutions should be determined experimentally by the investigator.

Comment: Antigen size: 813 AA

Restrictions: For Research Use only

Handling

Format: Liquid

Concentration: Lot specific

Buffer: Liquid. Purified antibody supplied in 1x PBS buffer with 0.09 % (w/v) sodium azide and 2 % sucrose.

Preservative: Sodium azide

Precaution of Use: This product contains Sodium azide: a POISONOUS AND HAZARDOUS SUBSTANCE which should be handled by trained staff only.

Handling Advice: Avoid repeated freeze-thaw cycles.

Storage: -20 °C

Storage Comment: For short term use, store at 2-8°C up to 1 week. For long term storage, store at -20°C in small aliquots to prevent freeze-thaw cycles.



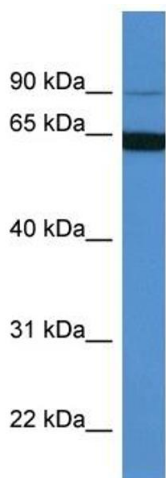
Western Blotting

Image 1. WB Suggested Anti-MAP6 Antibody Titration:

0.2-1 ug/ml

ELISA Titer: 1:1562500

Positive Control: Hela cell lysate



Rabbit Anti-MAP6 Antibody
Catalog Number: ARP60316
Lot Number: QC31283
Lane: Hela Cell Lysate

Antibody Titration: 1.0 µg/ml
Gel Concentration: 12%

Western Blotting

Image 2. WB Suggested Anti-MAP6

Antibody Titration: 0.2-1 µg/mL ELISA Titer: 1:1562500

Positive Control: Hela cell lysate