

Datasheet for ABIN2788404  
**anti-MAPKSP1 antibody (N-Term)**



[Go to Product page](#)

1 Image

## Overview

Quantity:	100 µL
Target:	MAPKSP1
Binding Specificity:	N-Term
Reactivity:	Human, Mouse, Rat, Cow, Horse, Rabbit, Dog, Guinea Pig, Zebrafish (Danio rerio)
Host:	Rabbit
Clonality:	Polyclonal
Conjugate:	This MAPKSP1 antibody is un-conjugated
Application:	Western Blotting (WB)

## Product Details

Immunogen:	The immunogen is a synthetic peptide directed towards the N-terminal region of Human LAMTOR3
Sequence:	LPSVEGLHAI VVSDRDGVPV IKVANDNAPE HALRPGFLST FALATDQGSK
Predicted Reactivity:	Cow: 100%, Dog: 100%, Guinea Pig: 100%, Horse: 100%, Human: 100%, Mouse: 100%, Rabbit: 100%, Rat: 100%, Zebrafish: 100%
Characteristics:	This is a rabbit polyclonal antibody against LAMTOR3. It was validated on Western Blot.
Purification:	Affinity Purified

## Target Details

Target:	MAPKSP1
---------	---------

## Target Details

Alternative Name:	LAMTOR3 ( <a href="#">MAPKSP1 Products</a> )
Background:	<p>This gene encodes a scaffold protein that functions in the extracellular signal-regulated kinase (ERK) cascade. The protein is localized to late endosomes by the mitogen-activated protein-binding protein-interacting protein, and binds specifically to MAP kinase kinase MAP2K1/MEK1, MAP kinase MAPK3/ERK1, and MAP kinase MAPK1/ERK2. Studies of the orthologous gene in mouse indicate that it regulates late endosomal traffic and cell proliferation. Alternatively spliced transcript variants encoding multiple isoforms have been observed for this gene. A pseudogene of this gene is located on the long arm of chromosome 13.</p> <p>Alias Symbols: MAP2K1IP1, MAPBP, MAPKSP1, MP1, PRO0633, Ragulator3</p> <p>Protein Interaction Partner: NIF3L1, LAMTOR2, IBTK, MBD2, BHMT, PEF1, C19orf70, MRPL43, PRR3, LPCAT1, MRPS9, MRPS35, MRPL47, TOMM22, DDX28, TSR1, RNMTL1, LAMTOR1, NDUFB11, TMCO1, MRPL39, PTRH2, RAB14, MRPL51, MRPL22, UQCRQ, PUF60, RAB31, TOMM40, MSLN, TOMM70A, NUPL1, SPCS2, PICALM, V</p> <p>Protein Size: 124</p>
Molecular Weight:	13 kDa
Gene ID:	8649
NCBI Accession:	<a href="#">NM_021970</a> , <a href="#">NP_068805</a>
UniProt:	<a href="#">Q9UHA4</a>
Pathways:	<a href="#">PI3K-Akt Signaling</a>

## Application Details

Application Notes:	Optimal working dilution should be determined by the investigator.
Restrictions:	For Research Use only

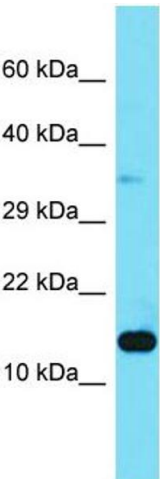
## Handling

Format:	Liquid
Concentration:	1 mg/mL
Buffer:	Liquid. Purified antibody supplied in 1x PBS buffer with 0.09 % (w/v) sodium azide and 2 % sucrose.
Preservative:	Sodium azide
Precaution of Use:	This product contains Sodium azide: a POISONOUS AND HAZARDOUS SUBSTANCE which

Handling

	should be handled by trained staff only.
Handling Advice:	Avoid repeat freeze-thaw cycles.
Storage:	-20 °C
Storage Comment:	For short term use, store at 2-8°C up to 1 week. For long term storage, store at -20°C in small aliquots to prevent freeze-thaw cycles.

Images



**Western Blotting**

**Image 1.** Host: Rabbit Target Name: LAMTOR3 Sample Type: 293T Whole Cell lysates Antibody Dilution: 1.0ug/ml LAMTOR3 is supported by BioGPS gene expression data to be expressed in HEK293T