

Datasheet for ABIN2788410
anti-MCHR2 antibody (C-Term)[Go to Product page](#)

1 Image

Overview

Quantity:	100 µL
Target:	MCHR2
Binding Specificity:	C-Term
Reactivity:	Human, Cow
Host:	Rabbit
Clonality:	Polyclonal
Conjugate:	This MCHR2 antibody is un-conjugated
Application:	Western Blotting (WB)

Product Details

Immunogen:	The immunogen is a synthetic peptide directed towards the C-terminal region of Human MCHR2
Sequence:	YVGYYSICL SYASSSINPF LYILLSGNFQ KRLPQIQRRR TEKEINNMGN
Predicted Reactivity:	Cow: 85%, Human: 100%
Characteristics:	This is a rabbit polyclonal antibody against MCHR2. It was validated on Western Blot.
Purification:	Affinity Purified

Target Details

Target:	MCHR2
Alternative Name:	MCHR2 (MCHR2 Products)

Target Details

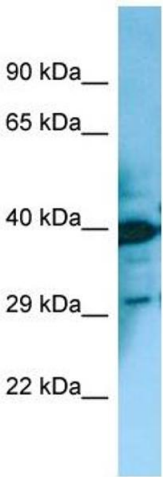
Background:	MCHR2 is a receptor for melanin-concentrating hormone, coupled to G proteins that activate phosphoinositide hydrolysis. Alias Symbols: GPR145, MCH2, MCH2R, SLT Protein Interaction Partner: PMCH, Protein Size: 340
Molecular Weight:	39 kDa
Gene ID:	84539
NCBI Accession:	NM_032503 , NP_115892
UniProt:	Q969V1

Application Details

Application Notes:	Optimal working dilutions should be determined experimentally by the investigator.
Comment:	Antigen size: 340 AA
Restrictions:	For Research Use only

Handling

Format:	Liquid
Concentration:	Lot specific
Buffer:	Liquid. Purified antibody supplied in 1x PBS buffer with 0.09 % (w/v) sodium azide and 2 % sucrose.
Preservative:	Sodium azide
Precaution of Use:	This product contains Sodium azide: a POISONOUS AND HAZARDOUS SUBSTANCE which should be handled by trained staff only.
Handling Advice:	Avoid repeated freeze-thaw cycles.
Storage:	-20 °C
Storage Comment:	For short term use, store at 2-8°C up to 1 week. For long term storage, store at -20°C in small aliquots to prevent freeze-thaw cycles.



Western Blotting

Image 1. WB Suggested Anti-MCHR2 Antibody Titration:
1.0 ug/ml Positive Control: Fetal Bladder