

Datasheet for ABIN2788428
anti-STYXL1 antibody (Middle Region)



[Go to Product page](#)

2 Images

Overview

Quantity:	100 µL
Target:	STYXL1
Binding Specificity:	Middle Region
Reactivity:	Human, Cow, Dog, Horse, Guinea Pig, Pig, Rabbit, Rat
Host:	Rabbit
Clonality:	Polyclonal
Conjugate:	This STYXL1 antibody is un-conjugated
Application:	Western Blotting (WB)

Product Details

Immunogen:	The immunogen is a synthetic peptide directed towards the middle region of human STYXL1
Sequence:	FLRTQKIIWM PQELDAFQPY PIEIVPGKVF VGNFSQACDP KIQKDLKIKA
Predicted Reactivity:	Cow: 100%, Dog: 100%, Guinea Pig: 86%, Horse: 100%, Human: 100%, Pig: 100%, Rabbit: 93%, Rat: 79%
Characteristics:	This is a rabbit polyclonal antibody against STYXL1. It was validated on Western Blot.
Purification:	Affinity Purified

Target Details

Target:	STYXL1
Alternative Name:	STYXL1 (STYXL1 Products)

Target Details

Background: STYXL1 is a probable pseudophosphatase. It contains a Ser residue instead of a conserved Cys residue in the dsPTPase catalytic loop which probably renders it catalytically inactive as a phosphatase. The binding pocket may be however sufficiently preserved to bind phosphorylated substrates, and maybe protect them from phosphatases.

Alias Symbols: DUSP24, MK-STYX

Protein Interaction Partner: UBC, TGFBR1, EHD4, ATXN10, SMC1A, RPS29, PSPH, AES, FLI1,

Protein Size: 313

Molecular Weight: 36 kDa

Gene ID: 51657

NCBI Accession: [NM_016086](#), [NP_057170](#)

UniProt: [Q9Y6J8](#)

Application Details

Application Notes: Optimal working dilutions should be determined experimentally by the investigator.

Comment: Antigen size: 313 AA

Restrictions: For Research Use only

Handling

Format: Liquid

Concentration: Lot specific

Buffer: Liquid. Purified antibody supplied in 1x PBS buffer with 0.09 % (w/v) sodium azide and 2 % sucrose.

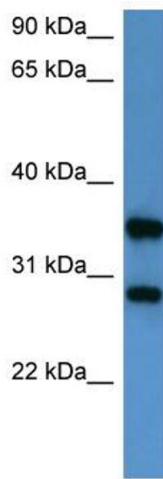
Preservative: Sodium azide

Precaution of Use: This product contains Sodium azide: a POISONOUS AND HAZARDOUS SUBSTANCE which should be handled by trained staff only.

Handling Advice: Avoid repeated freeze-thaw cycles.

Storage: -20 °C

Storage Comment: For short term use, store at 2-8°C up to 1 week. For long term storage, store at -20°C in small aliquots to prevent freeze-thaw cycles.



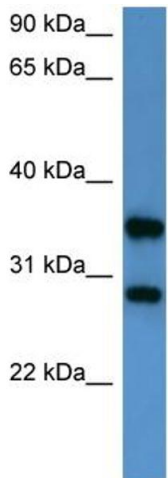
Western Blotting

Image 1. WB Suggested Anti-STYXL1 Antibody Titration:

0.2-1 ug/ml

ELISA Titer: 1:62500

Positive Control: HepG2 cell lysate



Rabbit Anti-STYXL1 Antibody
Catalog Number: ARP60375
Lot Number: QC31248
Lane: HepG2 Cell Lysate

Antibody Titration: 1.0µg/ml
Gel Concentration: 12%

Western Blotting

Image 2. WB Suggested Anti-STYXL1

Antibody Titration: 0.2-1 µg/mL ELISA Titer: 1:2500

Positive Control: HepG2 cell lysate